



Ormiston Grove, W12

£425,000

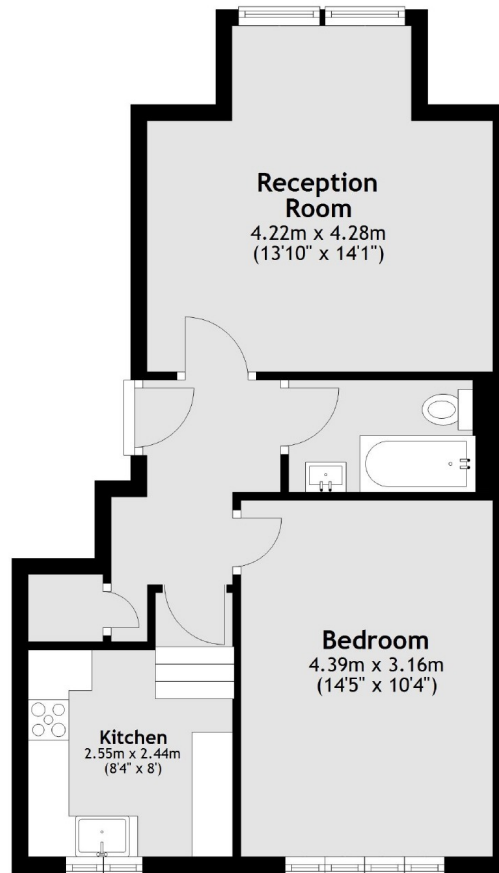
A beautiful and spacious one bedroom apartment on the raised ground floor of an Edwardian building. The property has separate kitchen and living room with wooden parquet flooring, high ceilings and and bay window, large double bedroom, family bathroom and plenty of storage.

Ormiston Grove is a residential street, close to the local amenities of Uxbridge Road. The green space of Wormholt Park is nearby along with the excellent transport links of White City, Shepherd's Bush and Shepherd's Bush Market underground.

Features

- One Bedroom
- Purpose Built
- Chain Free
- Parquet Flooring
- High Ceilings
- Westfield Centre

Ormiston Grove, London, W12



Total area: approx. 46.8 sq. metres (504.0 sq. feet)