



Normandy Place, W12

£410,000

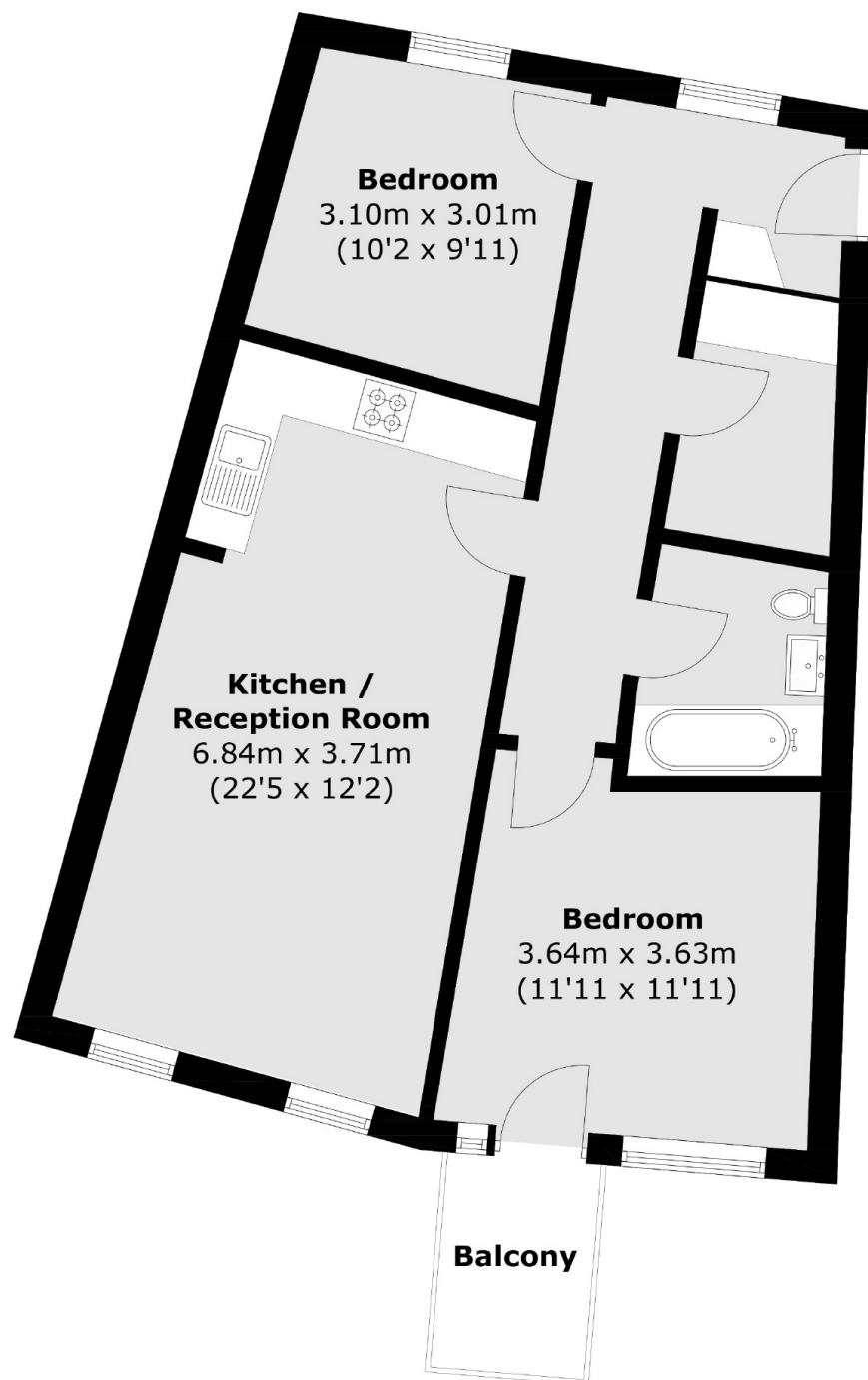
A spacious two bedroom flat situated on the second floor of this modern purpose built block and comprises two double bedrooms, an open plan kitchen living area and a private balcony.

Normandy Place is within walking distance to the Central Line and Westfield Shopping Centre. Notting Hill is nearby with the green space of Holland Park a short walk away.

Features

- Two Bedrooms
- Purpose Built
- Second Floor
- Private Balcony
- Open Plan Living
- Central Line

Normandy Place, London, W12



Second Floor

Total area (approx.): 63.4 sq. m (682.4 sq. ft)

Balcony area (approx.): 3.1 sq. m (33.4 sq. ft)

Dexters

Shepherds Bush and Brook Green
53 Shepherds Bush Green
London
W12 8PS
Sales
020 8740 2900

Energy Rating: B. We aim to make our particulars both accurate and reliable. However they are not guaranteed; nor do they form part of an offer or contract. If you require clarification on any points then please contact us, especially if you're traveling some distance to view. Please note that appliances and heating systems have not been tested and therefore no warranties can be given as to their good working order.

 **RICS** | Regulated
Estate Agent
and Letting Agent

[dexters.co.uk](https://www.dexters.co.uk)