



Woodstock Grove, W12

£399,900

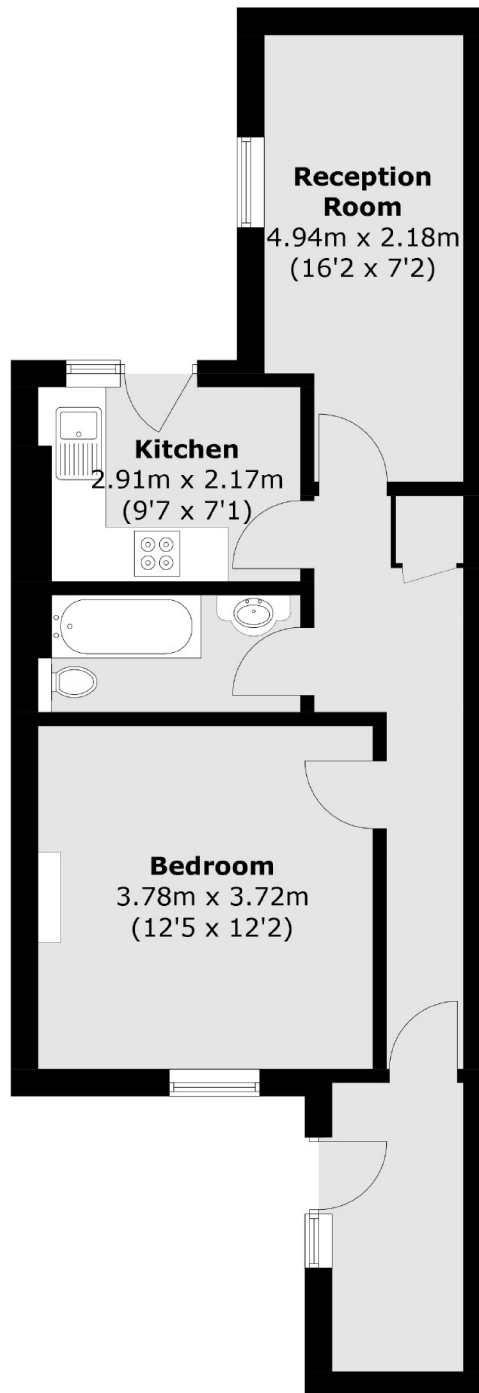
A modern one bedroom flat on the lower ground floor of this Victorian conversion. This property has high ceilings, a west facing garden and has been tastefully refurbished throughout.

Woodstock Grove is located only a moments walk from the local amenities of Shepherds Bush and Westfield Shopping Centre. The green space of Holland Park is nearby as are the cafes and restaurants of Brook Green and Notting Hill.

Features

- Excellent Location
- Private Entrance
- West Facing Garden
- Newly Refurbished
- Westfield
- Brand New Lease

Woodstock Grove, London, W12



Total area (approx.): 49.2 sq. m (529.6 sq. ft)