

Pavilion Terrace, W12

£475,000

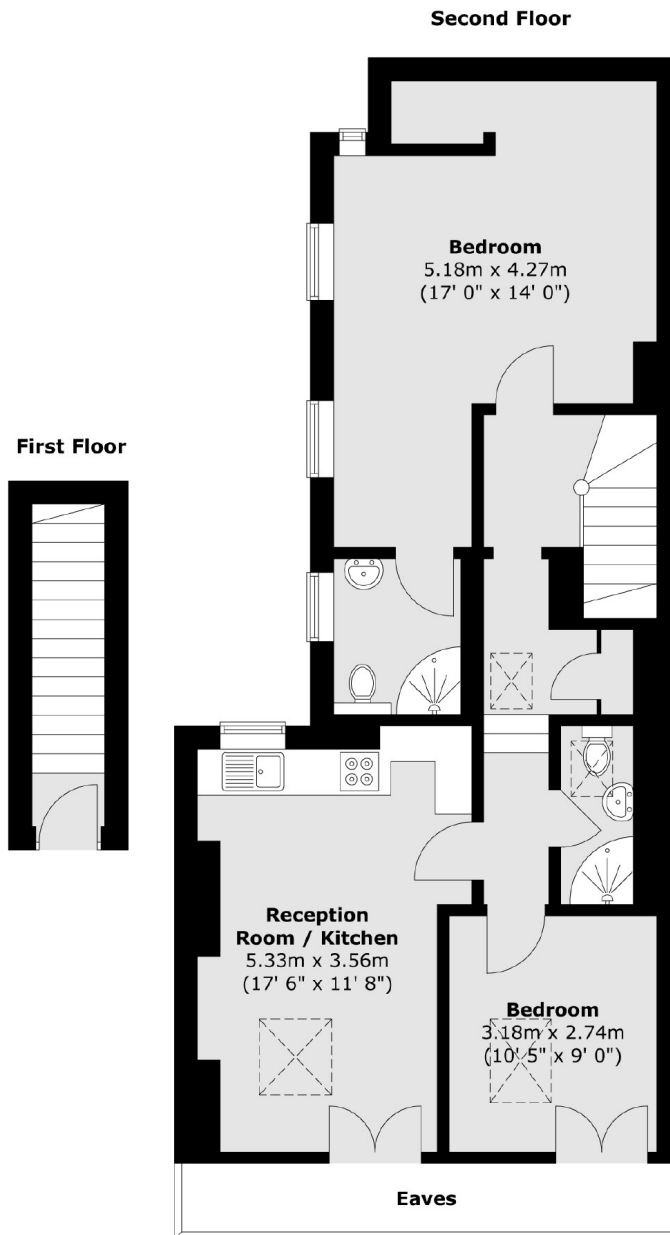
A spacious two bedroom, two bathroom property on the second floor of this Edwardian conversion. The flat hosts a spacious open plan kitchen and living with lots of natural light and would make for a lovely home.

Pavilion Terrace is located on Wood Lane and is only a short walk from Portobello Road and Notting Hill. The amenities of Westfield Shopping Centre are nearby as is the green space on Wormswood Scrubs Park

Features

- Two Bedroom
- Two Bathroom
- Open Plan Kitchen Living
- Share Of Freehold
- White City
- No Onwards Chain

Pavilion Terrace, London, W12



Total area (approx.) : 73.7 sq. m (793 sq. ft)
(Excluding Eaves)