



## Pavilion Terrace, W12

### £600,000

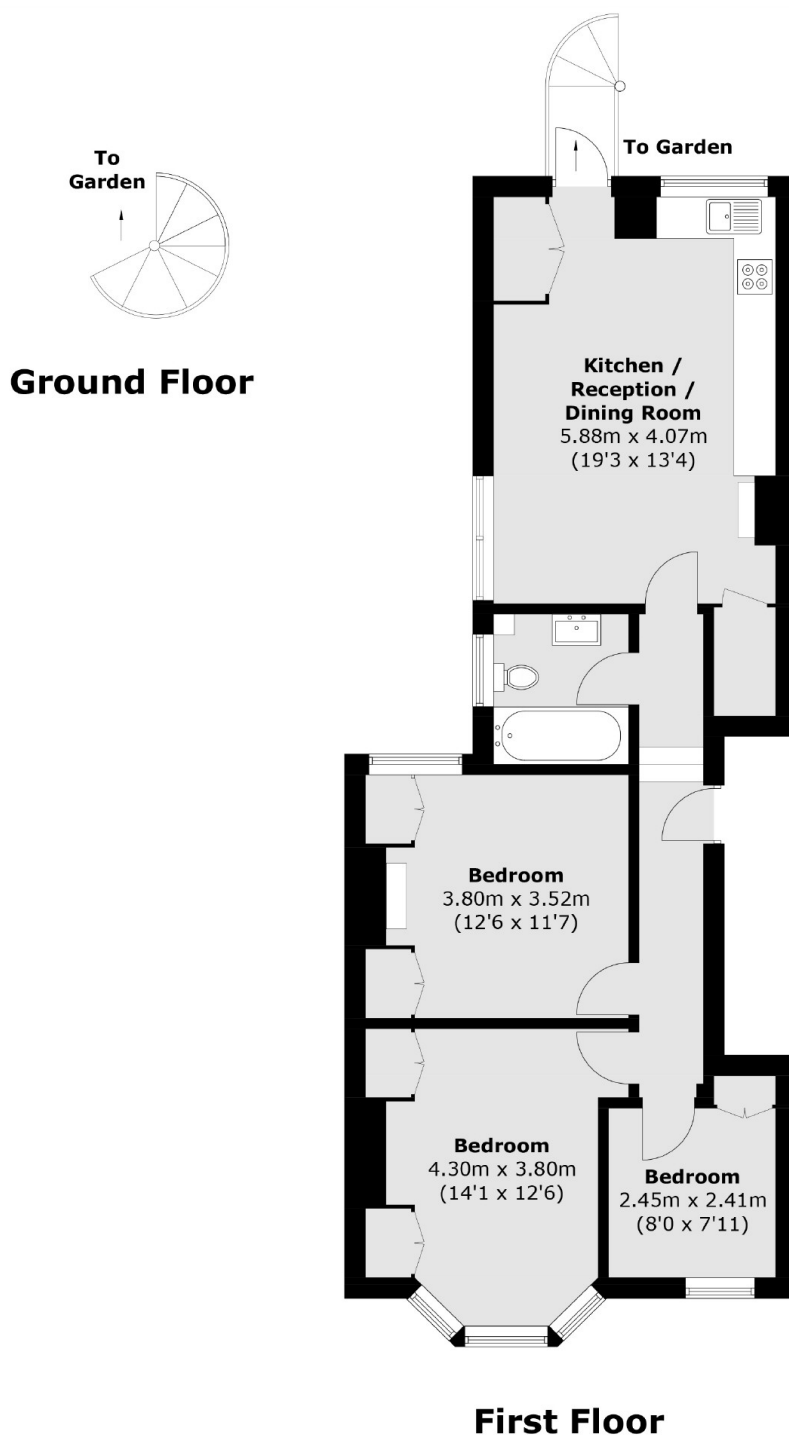
A well presented and bright three bedroom period converted apartment. This property has an open plan kitchen and living space with stairs leading to a private garden, three bedrooms and family bathroom.

Pavilion Terrace is located on Wood Lane and is only a short walk from Portobello Road and Notting Hill. The amenities of Westfield Shopping Centre are nearby as is the green space on Wormswood Scrubs Park

### Features

- Three Bedrooms
- Share Of Freehold
- Open Plan Living
- Private Garden
- White City
- No Onwards Chain

# Pavilion Terrace, London, W12



Total area (approx.): 73.2 sq. m (787.9 sq. ft)

## Dexters

Shepherds Bush and Brook Green  
53 Shepherds Bush Green  
London  
W12 8PS  
Sales  
020 8740 2900

Energy Rating: C. We aim to make our particulars both accurate and reliable. However they are not guaranteed; nor do they form part of an offer or contract. If you require clarification on any points then please contact us, especially if you're traveling some distance to view. Please note that appliances and heating systems have not been tested and therefore no warranties can be given as to their good working order.

 **RICS** | Regulated  
Estate Agent  
and Letting Agent

dexters.co.uk