



Wormholt Road, W12

£1,125,000

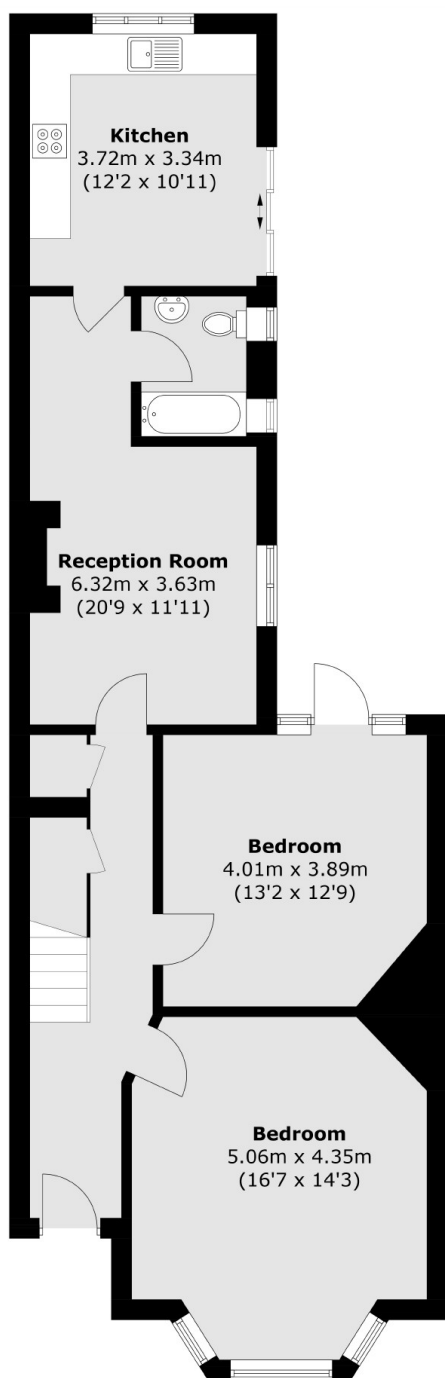
A large six bedroom freehold house with potential to extend and make into a lovely family home or buy to let investment. This property has over 1700sqft of space with two bathrooms and a large private garden.

Wormholt Road is a tree lined residential road brilliantly located for the cafes, delis, boutique shops and independent restaurants on Askew Road. The green spaces of Ravenscourt Park and Holland Park are only a short walk away. The amenities of Westfield Shopping Centre and access to local transport links at Wood Lane, White City and Shepherds Bush are nearby

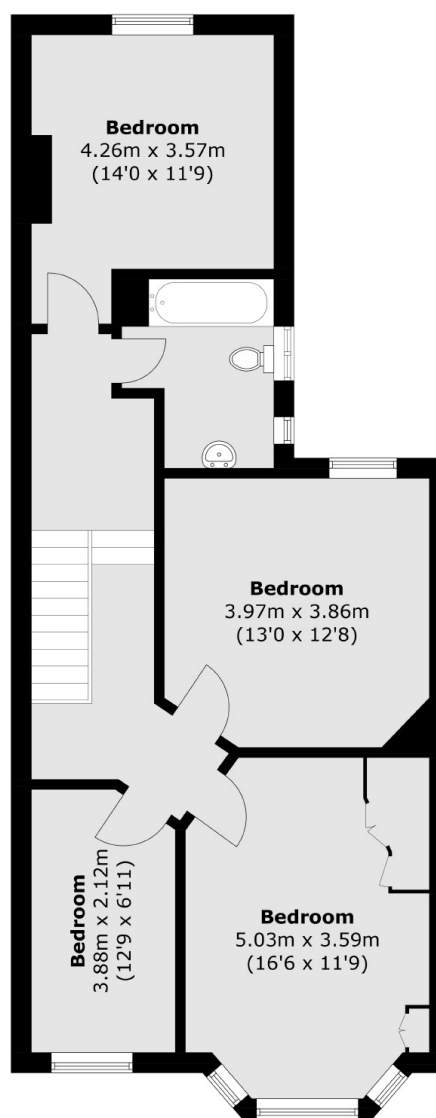
Features

- Six Bedrooms
- Freehold
- Private Garden
- Approx 1700sqft
- Private Parking
- No Onward Chain

Wormholt Road, London, W12



Ground Floor



First Floor

Total area (approx.): 158.6 sq. m (1707.1 sq. ft)