



Bassein Park Road, W12

£400,000

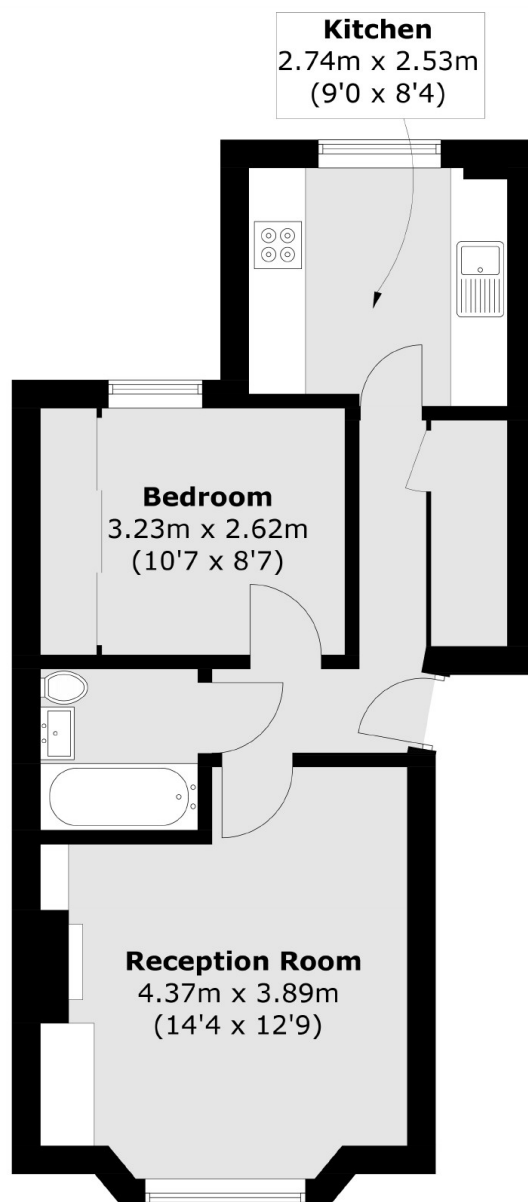
A well presented one bedroom apartment on the raised ground floor set in the heart of Askew Village. This beautiful home has a separate kitchen and living room, double bedroom, sash windows and is sold chain free.

Bassein Park Road is found just off Askew Village with all of its shops and cafes. There is easy access to Shepherds Bush with Westfields shopping centre and Ravenscourt Park is less than half a mile away.

Features

- One Bedroom
- Raised Ground Floor
- Victorian Conversion
- Chain Free
- Long Lease
- Askew Village

Bassein Park Road, London, W12



Total area (approx.): 41.1 sq. m (442.4 sq. ft)