



St. Stephens Avenue, W12

£600 Per week

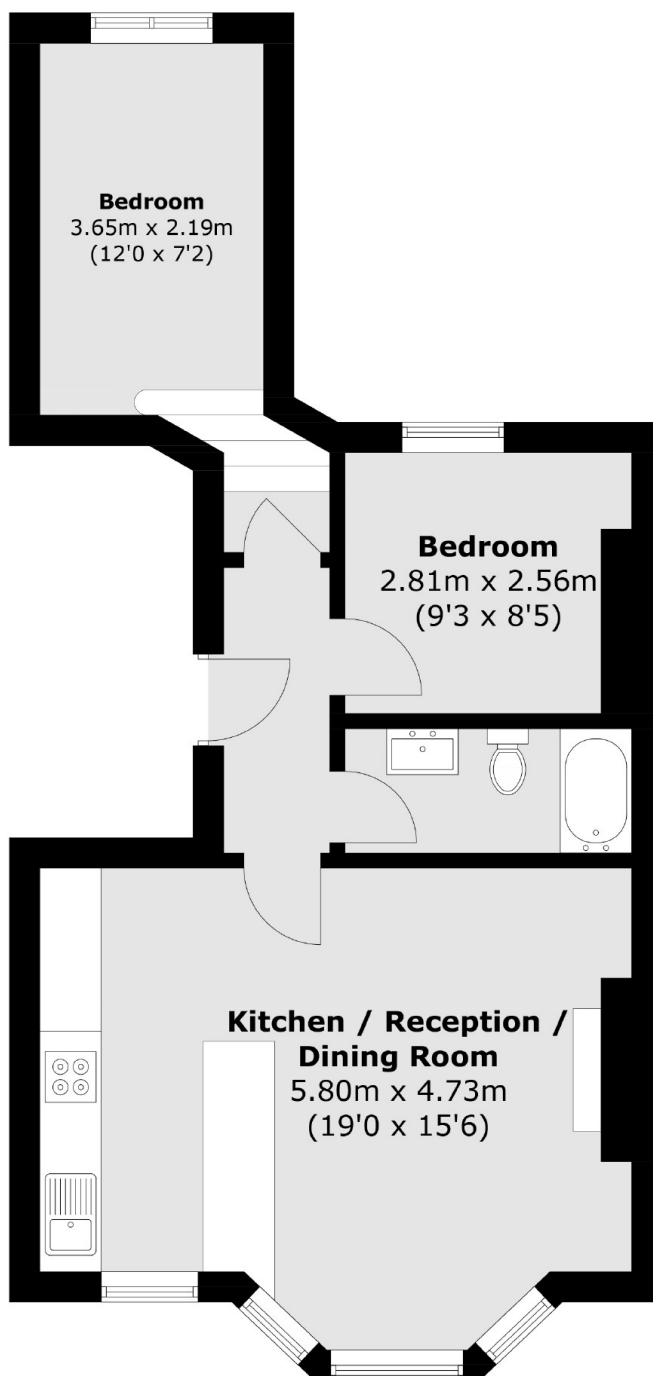
This immaculately presented two bedroom property boasts a bright open plan living space with modern fitted kitchen, breakfast bar and high tech appliances, two double bedrooms and a family size bathroom.

St Stephens Avenue is located approximately 0.5 Miles from Shepherds Bush station (Hammersmith and City line) and the Westfield shopping centre.

Features

- Two Bedrooms
- Open Plan Living
- Modern Interior
- Breakfast Bar
- Wooden Flooring
- Centrally Located

St. Stephens Avenue, London, W12



Total area (approx.): 49.5 sq. m (532.8 sq. ft)