



Mellitus Street, W12

£553 Per week

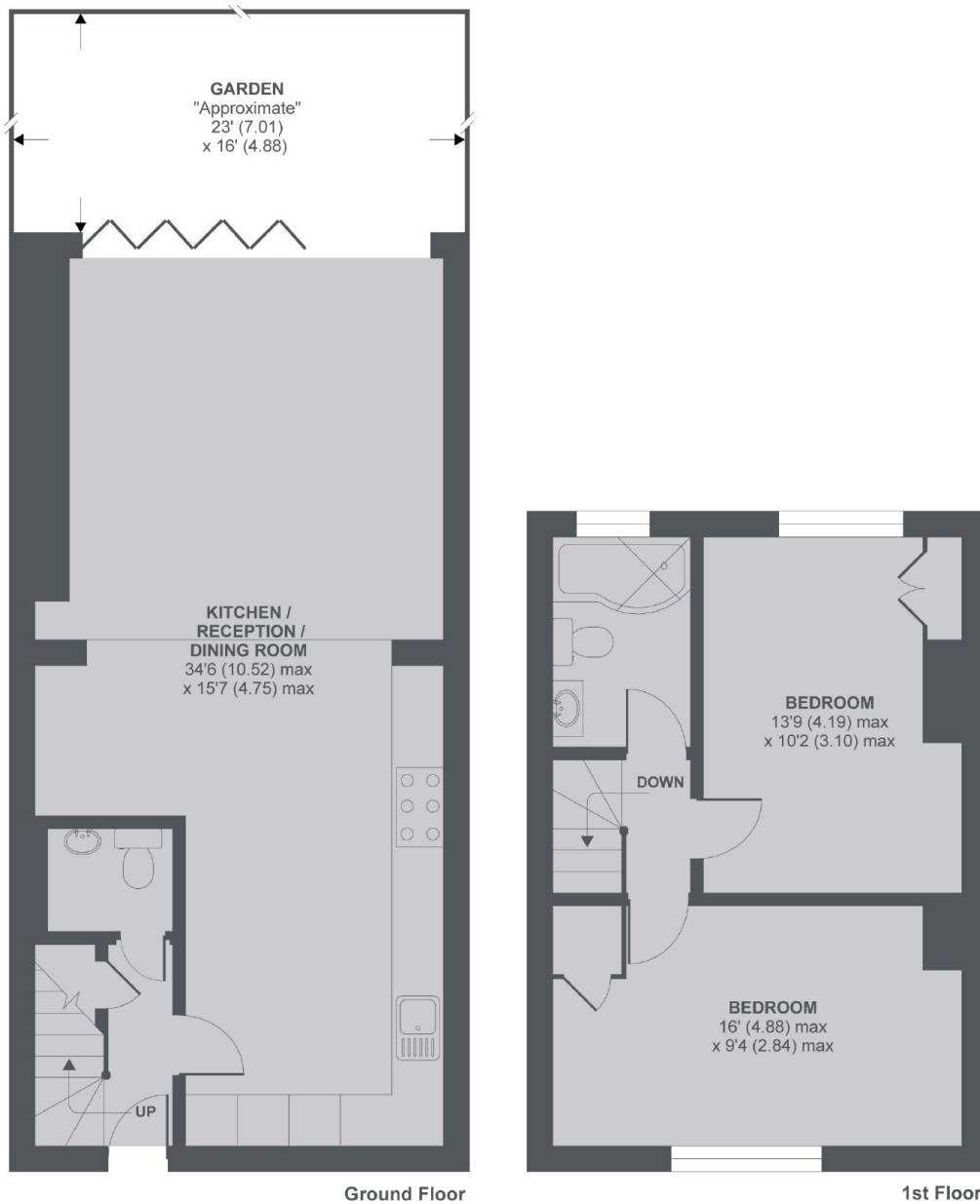
Terraced house with two double bedrooms and a beautiful finish, a large kitchen and a stunning extension which boasts a generous reception that has access to a huge garden, this house makes a perfect home.

There are also a number of excellent bus routes to Ladbroke Grove or Shepherds Bush Green and is close to Westfield Shopping Centre.

Features

- Two Bedroom
- Terraced House
- Open Plan Living
- Wood Flooring
- Excellent Condition
- Good Transport Links

Mellitus Street, London, W12



Mellitus Street, London, W12

MAIN HOUSE APPROX FLOOR AREA 903 SQ.FT 83.9 SQ.M

Copyright nichecom.co.uk 2018 REF : 250961

Dexters

Shepherds Bush and Brook Green
53 Shepherds Bush Green
London
W12 8PS
Lettings
020 8723 8899

Energy Rating: C. We aim to make our particulars both accurate and reliable. However they are not guaranteed; nor do they form part of an offer or contract. If you require clarification on any points then please contact us, especially if you're traveling some distance to view. Please note that appliances and heating systems have not been tested and therefore no warranties can be given as to their good working order.

 **RICS** | Regulated
Estate Agent
and Letting Agent

dexters.co.uk