



Milfoil Street, W12

£850,000

A wonderfully bright and spacious three/four bedroom terraced house with off street parking. This property has three double bedrooms, a private south facing garden and has been renovated to a high standard throughout.

Milfoil Street is located in the popular 'Flowers Estate' on a quite residential street. It has easy access to the A(M) 40 and A(M)4 and numerous local bus routes as well as Shepherds Bush stations.

Features

- Three/Four Bedrooms
- Separate Kitchen
- Terraced House
- Large South Facing Garden
- Off Street Parking
- No Onward Chain



Milfoil Street, W12

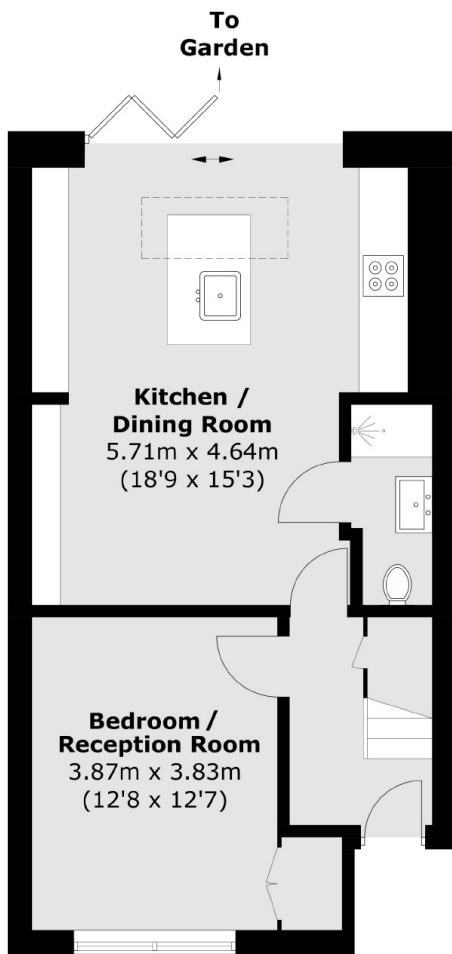
The property begins on the ground level with the hallway leading to a spacious lounge and a separate open-plan kitchen and dining area with a guest bathroom. The kitchen has bi-folding doors opening onto a large, landscaped south facing garden.

On the first floor you have the principle bedroom with a walk in wardrobe and a large guest double bedroom. Each room allows for plenty of natural light and ample storage. On the second floor you will find an additional bright and spacious bedroom.

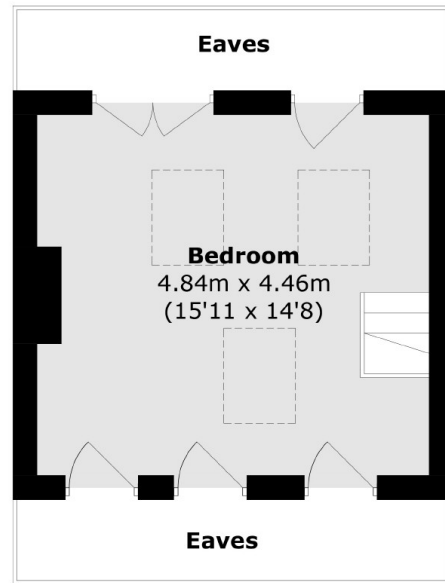
This house is well proportioned and thoughtfully designed with off street parking and would make for a fantastic home.



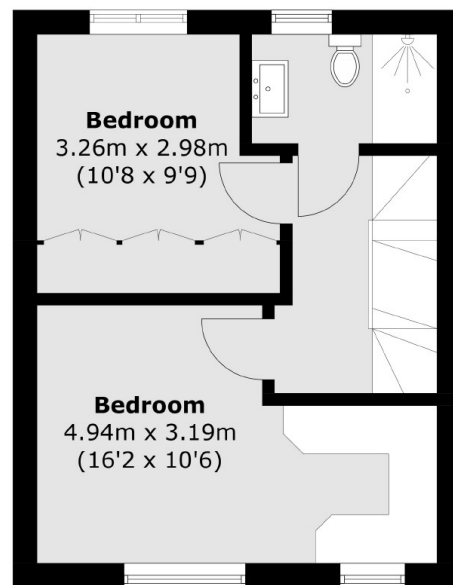
Milfoil Street, London, W12



Ground Floor



Second Floor



First Floor

Total area (approx.): 99.9 sq. m (1,075.3 sq. ft)
Excluding Eaves