



## Porten Road, W14

£400,000

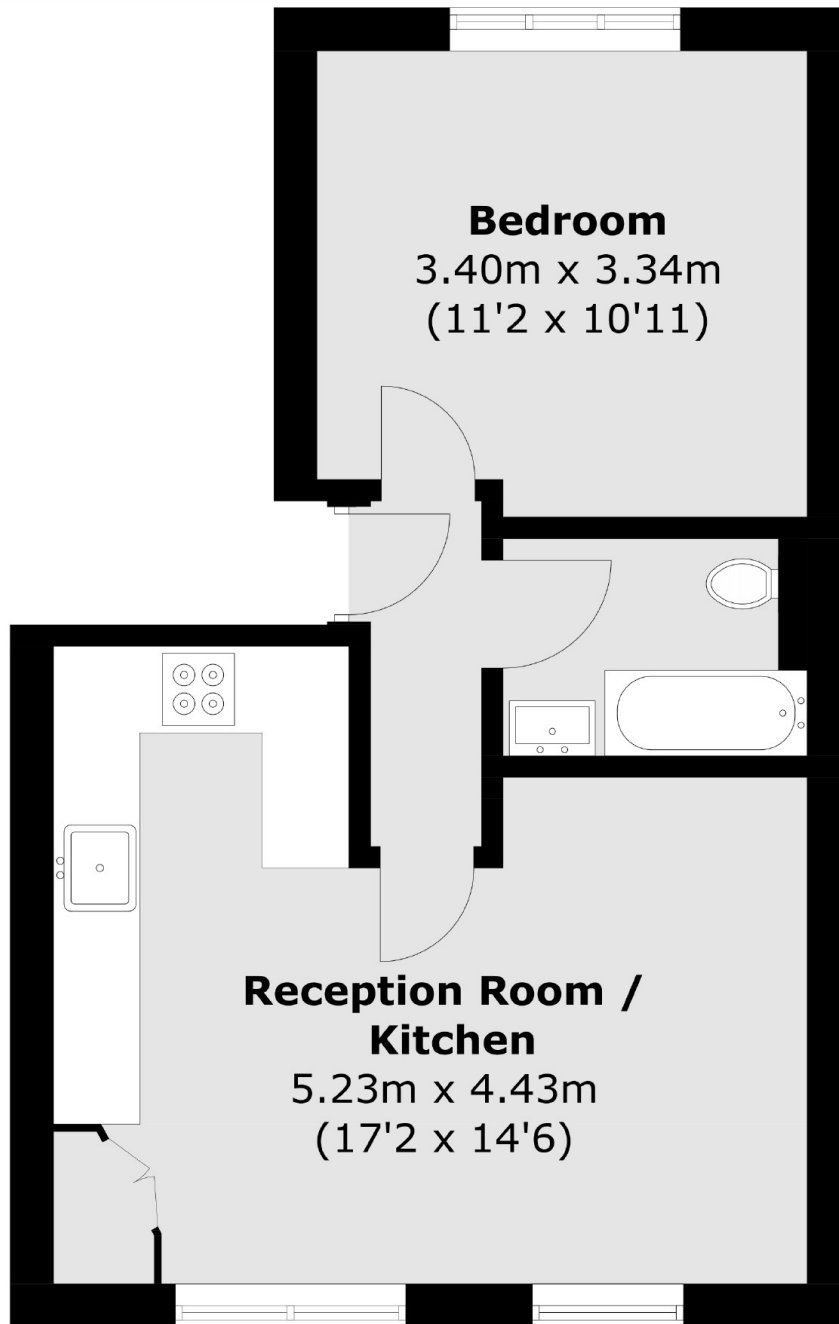
A superb one bedroom apartment situated in a quiet residential road in the heart of Brook Green. Immaculately presented, the flat features a bright reception room and a fully fitted kitchen.

Porten Road provides superb access for various transport and shopping amenities including Kensington Olympia and Shepherd's Bush Green stations.

### Features

- One Bedroom
- Period Conversion
- Open Plan Kitchen
- Quiet Road
- Heart Of Brook Green
- Kensington Olympia

**Porten Road,  
London, W14**



Total area (approx.): 37.0 sq. m (398.3 sq. ft)

**Dexters**

Shepherds Bush and Brook Green  
53 Shepherds Bush Green  
London  
W12 8PS  
Sales  
020 8740 2900

Energy Rating: C. We aim to make our particulars both accurate and reliable. However they are not guaranteed; nor do they form part of an offer or contract. If you require clarification on any points then please contact us, especially if you're traveling some distance to view. Please note that appliances and heating systems have not been tested and therefore no warranties can be given as to their good working order.

 **RICS** | Regulated  
Estate Agent  
and Letting Agent

[dexters.co.uk](https://www.dexters.co.uk)