



Becklow Gardens, W12

£400,000

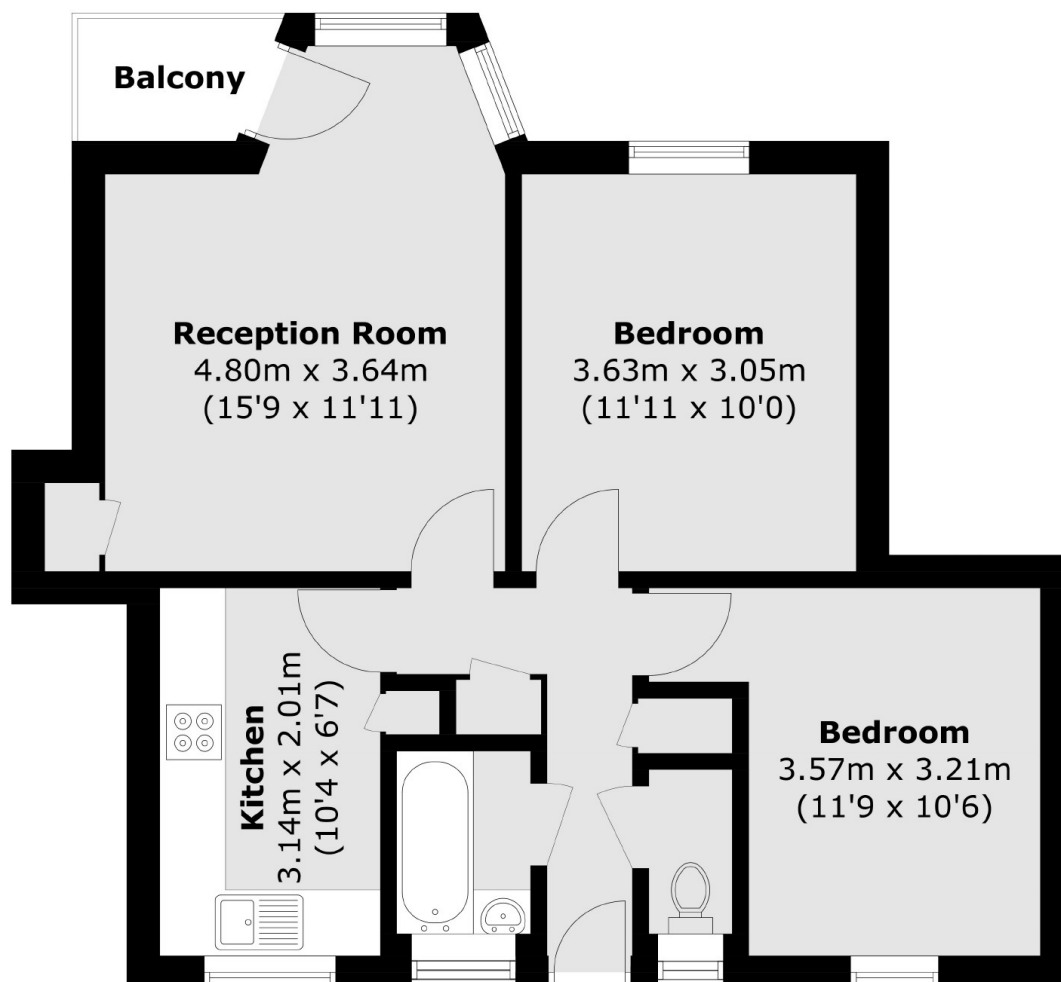
A spacious two bedroom property on the third floor of this purpose built block. This property has a separate kitchen and generous living room with a west facing private balcony. This would be ideal for a first home or investment.

The property is situated in the popular area of Askew Village, it is in the catchment area to outstanding Ofsted rated schools and Ravenscourt Park is also near by.

Features

- Two Bedrooms
- Separate Kitchen
- Private Balcony
- Purpose Built
- Very Good Condition
- Askew Village

Becklow Gardens, London, W12



Total area (approx.): 55.6 sq. m (598.5 sq. ft)
Balcony: 1.8 sq. m (19.4 sq. ft)