



Coverdale Road, W12

£860,000

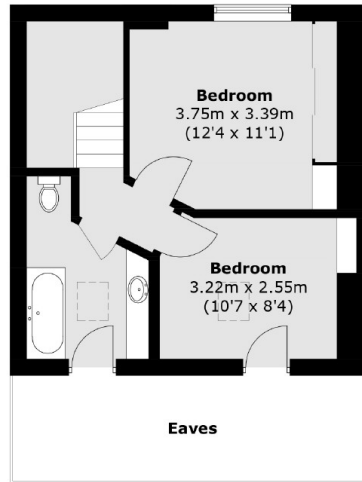
A spacious and well presented four bedroom Victorian conversion apartment. This apartment, split over the top three floors, comprises of large kitchen with dining space, separate living room, four bedrooms, an office space which leads to a large west facing private terrace.

Coverdale Road is a quiet, residential street with close proximity to the local amenities of Goldhawk Road and Shepherds Bush Market. The road falls into the catchment area for St. Stephens CofE primary school and the green space of Hammersmith Park is a short walk away.

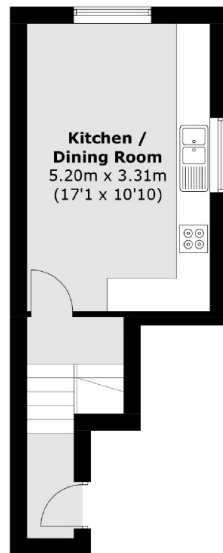
Features

Share of Freehold
Three/Four Bedrooms
Victorian Conversion
Separate Kitchen/Living
Private Terrace
Chain Free.

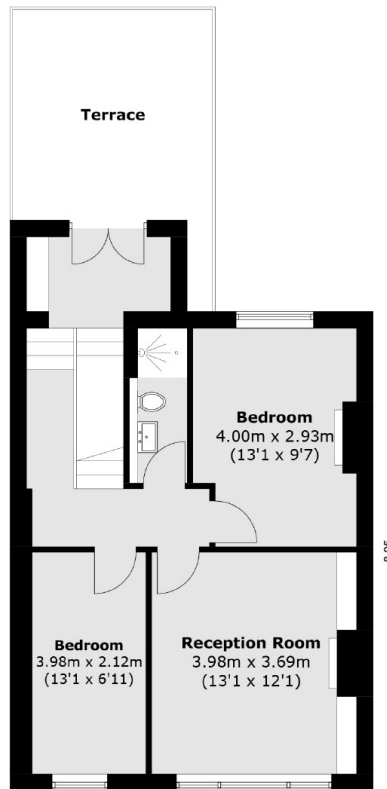
Coverdale Road, London, W12



Third Floor



First Floor



Second Floor

Total area (approx.): 109.0 sq. m (1173.2 sq. ft)
Terrace area : 14.5 sq. m (156.0 sq. ft)
(Excluding Eaves)