



Milson Road, W14

£680 Per week

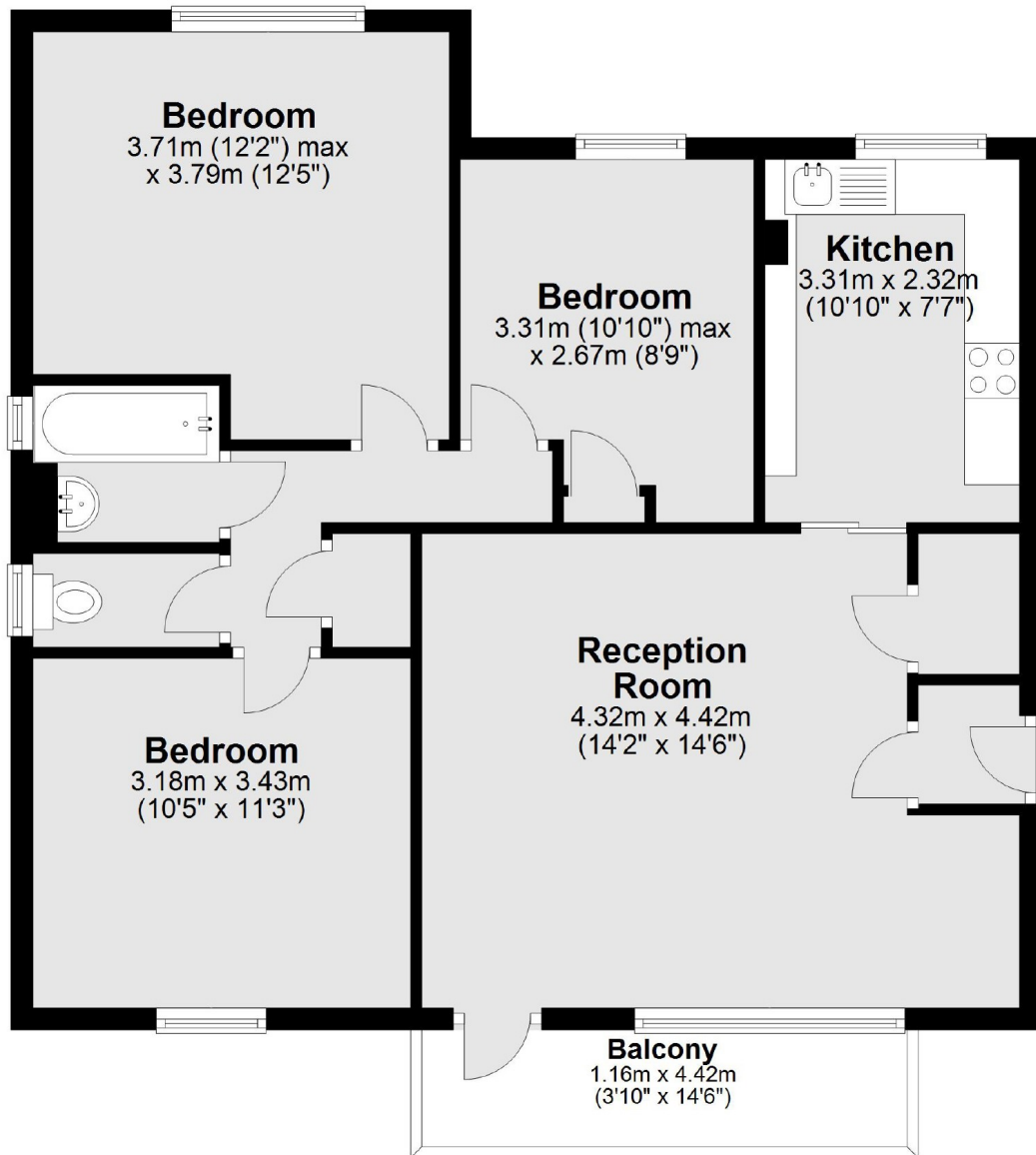
A large and bright three bedroom flat with modern kitchen and private balcony. The apartment allows for ample natural light and offers three double bedrooms and is finished to a modern standard throughout.

Located in the heart of Brook Green, Milson Road offers easy access to a local amenities. Shepherds Bush Station and Westfield are 0.5 miles away.

Features

- Brook Green
- Three Bedrooms
- Large Reception
- Modern Kitchen
- Wood Floors
- Ample Storage

Milson Road, London, W14



Total area: approx. 73.7 sq. metres (793.0 sq. feet)