



Godolphin Road, W12

£575,000

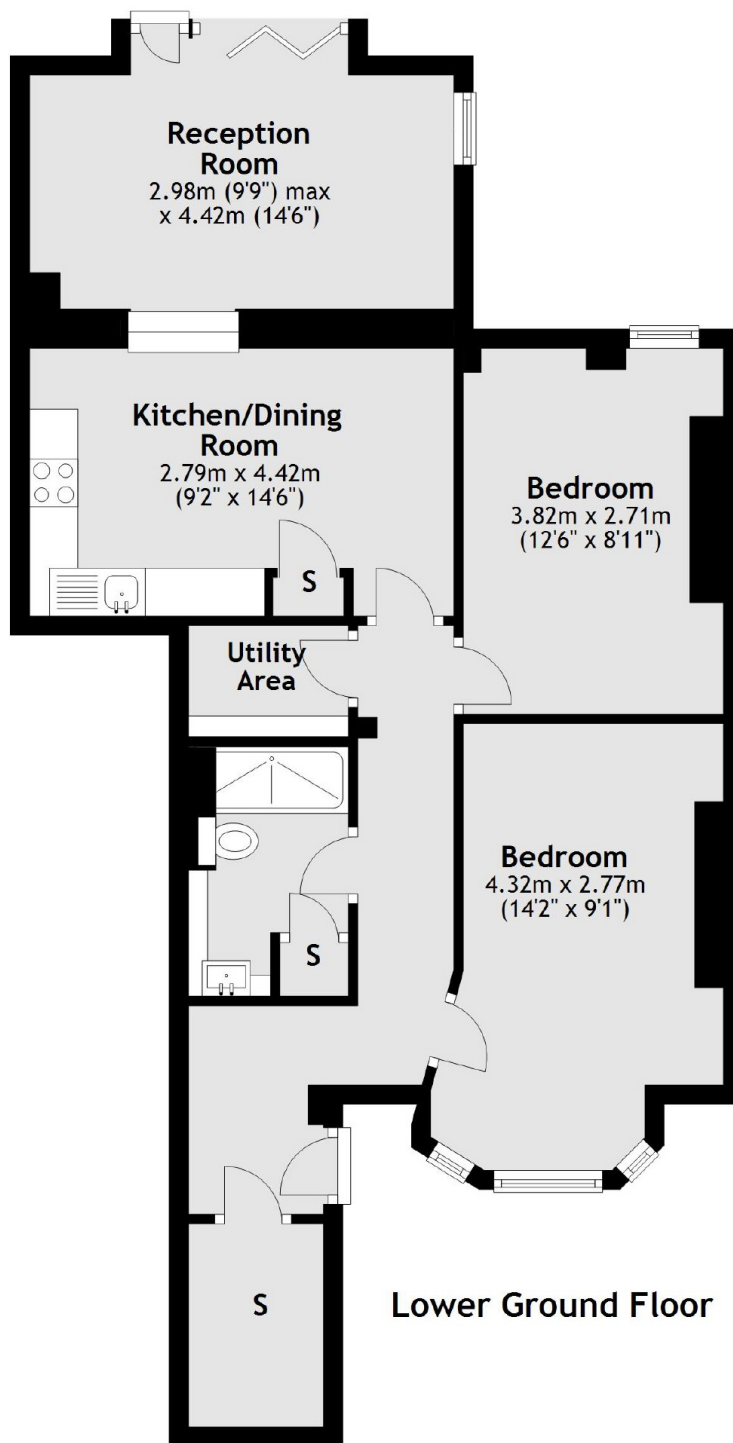
A two double bedroom flat set within an attractive Edwardian building. The property benefits from an open plan living space with bi-fold doors leading onto a west facing private garden.

Godolphin road is within half a mile of the amenities of Uxbridge Road. It is located under a mile from the Westfield shopping centre. The green space of Ravenscourt park is also close by.

Features

- Two Double Bedrooms
- West Facing Garden
- Open Plan Living
- Share Of Freehold
- Popular Location
- Close To Transport Links

Godolphin Road, London, W12



Total area: approx. 67.9 sq. metres (730.6 sq. feet)