



## Blythe Road, W14

### £399,000

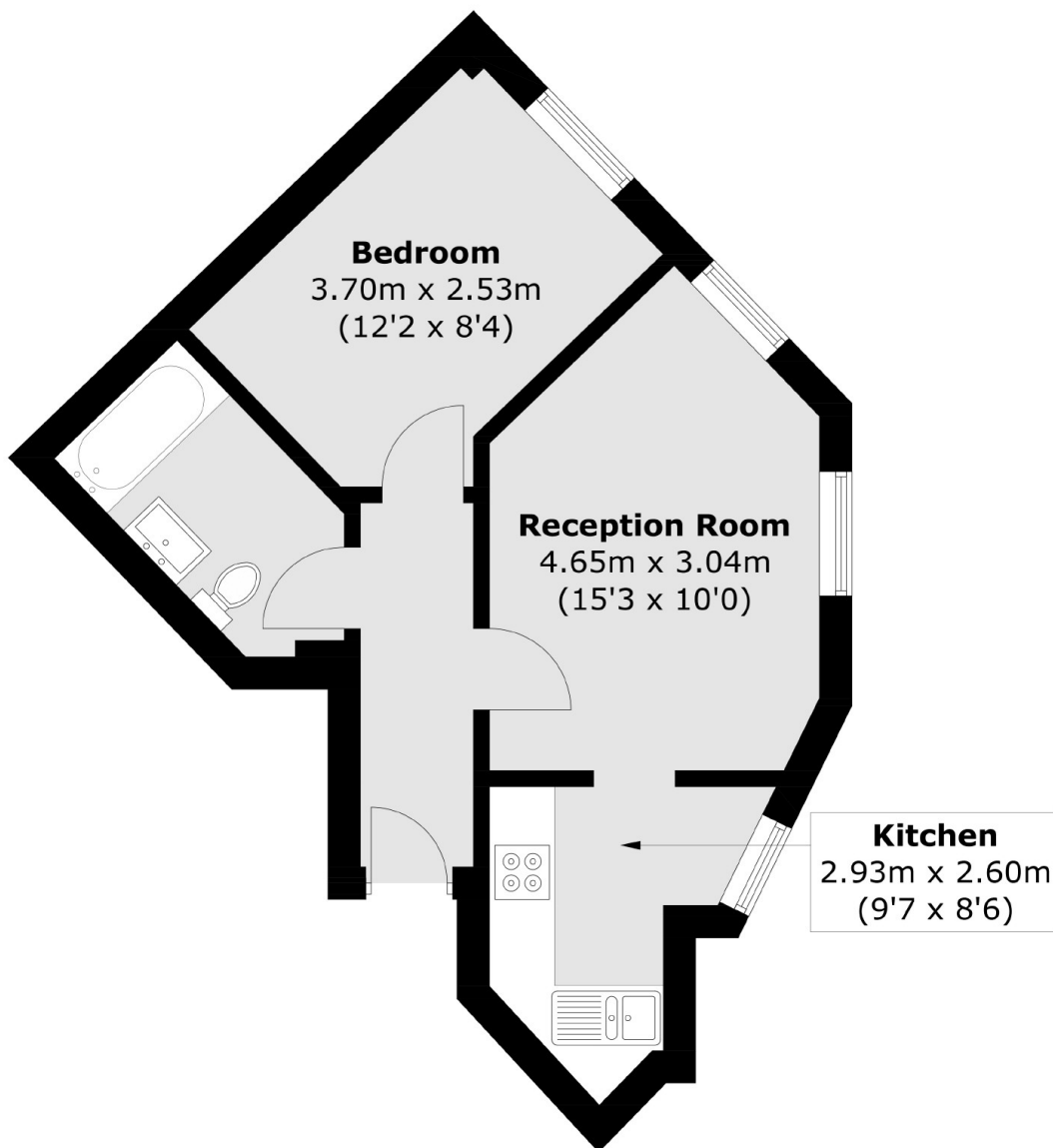
A well presented one bedroom apartment in the heart of Brook Green. This property located on the ground floor of this conversion has separate kitchen and living rooms, a double bedroom and a bathroom.

Blythe Road is located in the sought after area of Brook Green and is walking distance to the new Kensington Olympia development. The green space of Holland Park is nearby and the local amenities of High Street Kensington are a short walk away.

### Features

- One Bedroom
- Share Of Freehold
- Period Conversion
- Brook Green
- High Ceilings
- No Chain

# Blythe Road, London, W14



Total area (approx.): 35.7 sq. m (384.3 sq. ft)