



Lime Grove, W12

£470,000

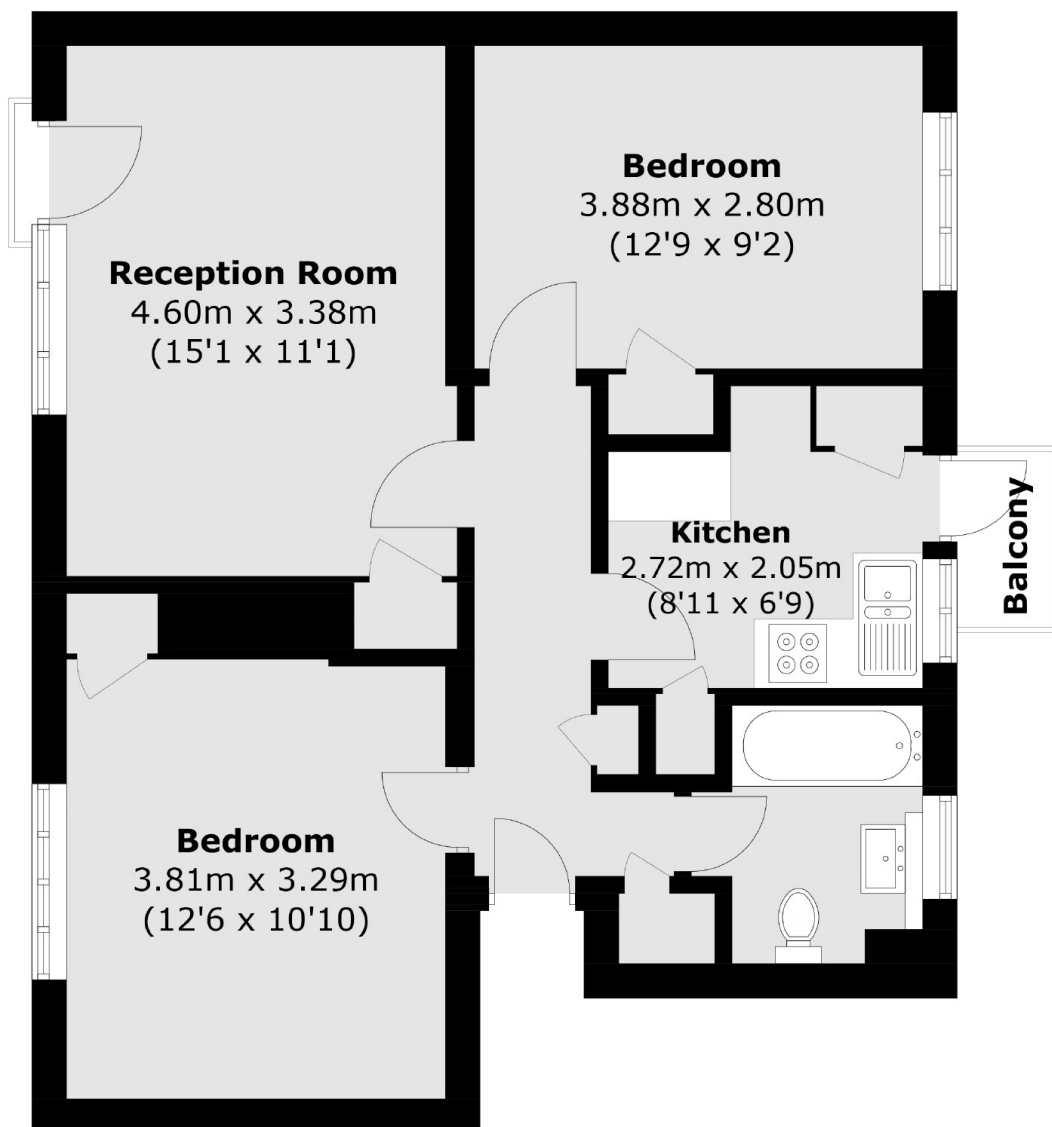
Set on the second floor of this purpose-built block is this two bedroom apartment. The property benefits from separate kitchen and living room, two double bedrooms, private balcony and plenty of storage.

Lime Grove is located a short distance from Goldhawk Road and Shepherds Bush Market stations. The shops, bars and restaurants at Westfield are less than half a mile from the property.

Features

- Two Bedrooms
- Separate Kitchen
- Balcony
- Ideal Rental Investment
- Excellent Location
- Shepherds Bush

Lime Grove, London, W12



Total area (approx.): 62.0 sq. m (667.4 sq. ft)
Balcony area (approx.): 1.3 sq. m (14.0 sq. ft)