



## Askew Crescent, W12

£525,000

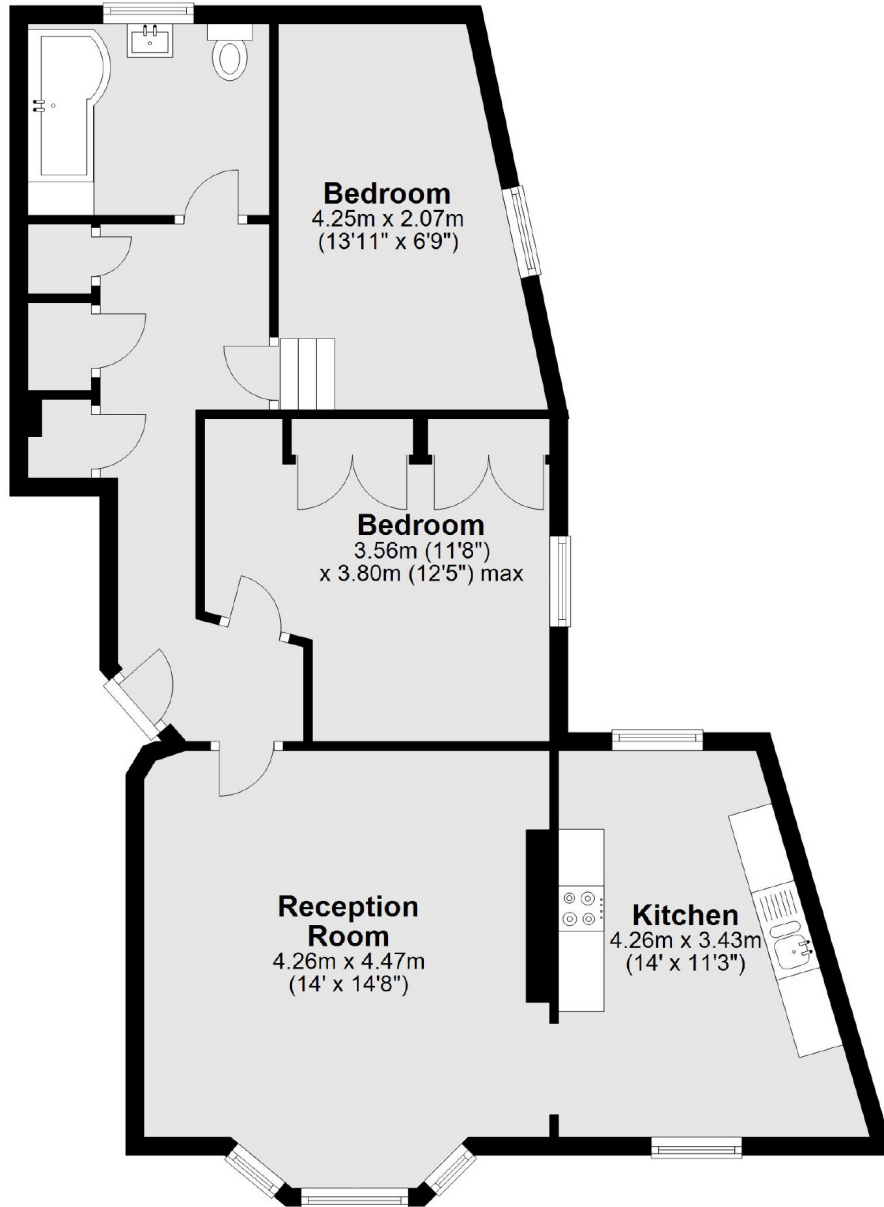
A spacious two bedroom flat on the raised ground floor of this Victorian Conversion. This property has a separate kitchen, high ceilings and the potential to make it your own.

The property is situated in the popular area of Askew Village, it is in the catchment area to outstanding Ofsted rated schools and Ravenscourt Park is also near by.

### Features

- Two Bedrooms
- High Ceilings
- Separate Kitchen
- Potential To Modernise
- Askew Village
- Raised Ground Floor

# Askew Crescent, London, W12



Total area: approx. 73.1 sq. metres (786.6 sq. feet)