



## Coningham Road, W12

£460 Per week

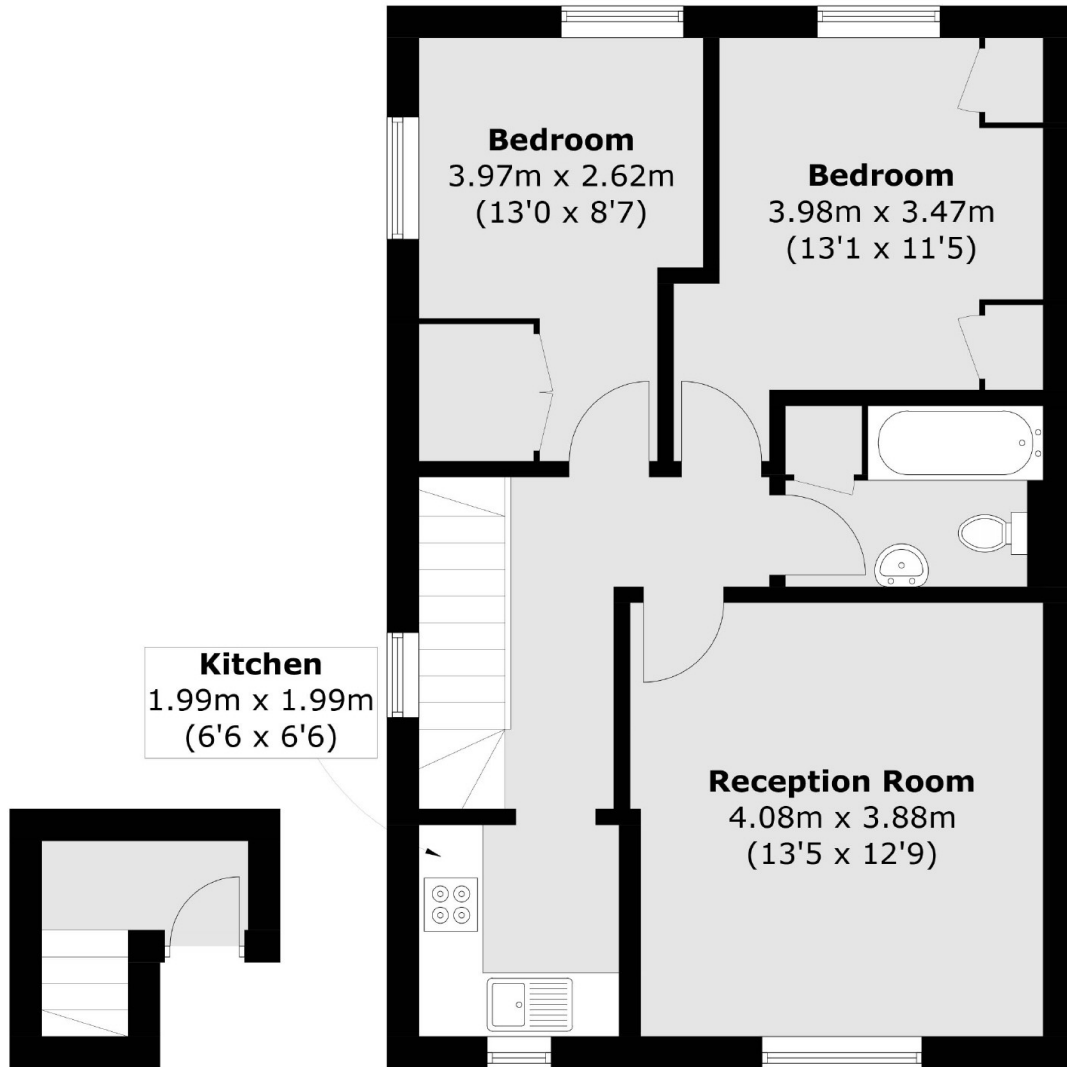
This bright and spacious top floor two bedroom conversion flat is situated on this popular tree lined road in the heart of Shepherds Bush. The property offers a large reception with a separate kitchen.

Coningham Road is ideally located under 0.5 miles from both Shepherds Bush Market and Shepherds Bush stations and offers easy access to Westfield Shopping Centre.

### Features

Top Floor Flat  
Bright Throughout  
Two Bedroom  
Large Reception  
Wood Flooring  
Separate Kitchen

Coningham Road,  
London, W12



**Ground Floor**

**First Floor**

Total area (approx.): 57.5 sq. m (618.9 sq. ft)