



Bolingbroke Road, W14

£594 Per week

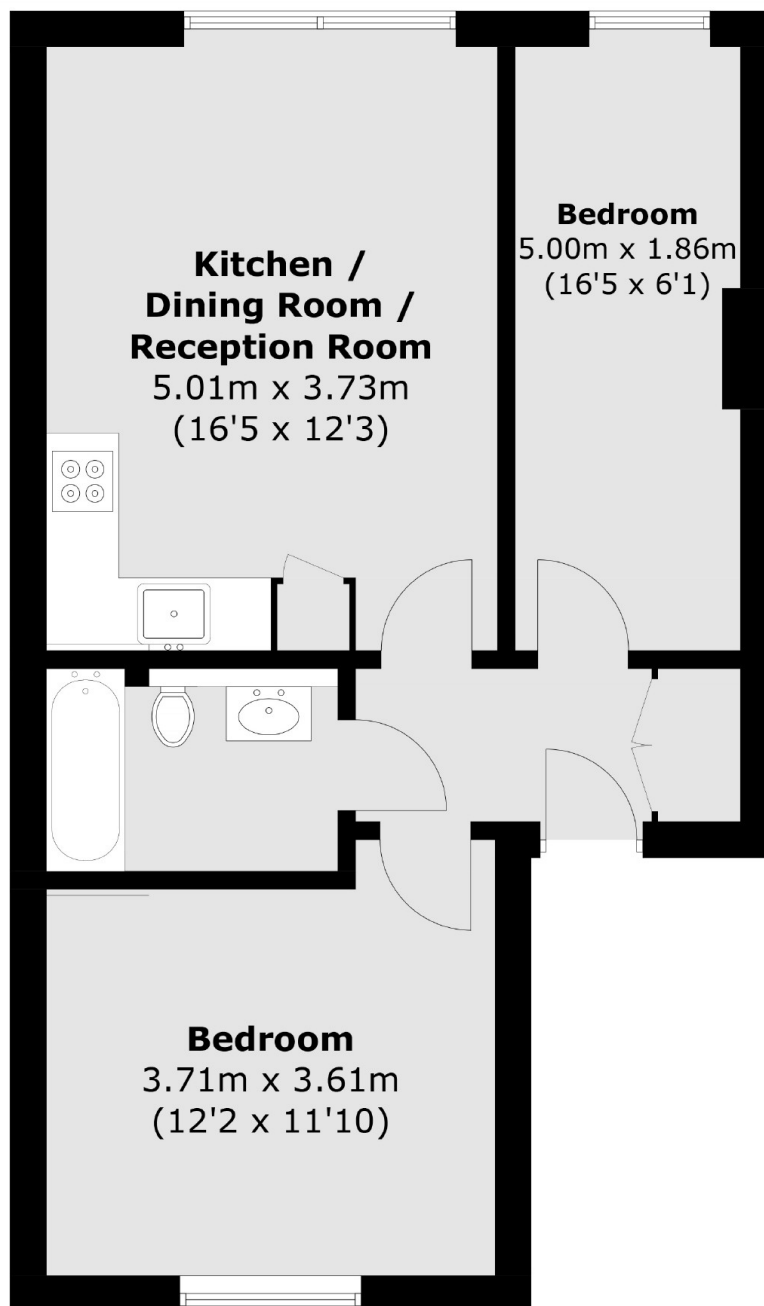
This recently refurbished two bedroom flat is situated on a quiet residential street, in the popular Brook Green area. In immaculate condition throughout, the flat boasts a bright open living space, with modern fitted kitchen, two bedrooms and a modern bathroom. The property further benefits from wood flooring throughout.

Bolingbroke Road offers convenient access to a variety of transport links with Shepherds Bush, Hammersmith and Kensington Olympia stations all within three quarters of a mile.

Features

- Two Bedrooms
- Newly Refurbished
- Open Plan Living
- Period Conversion
- Wooden Flooring
- Brook Green

Bolingbroke Road, London, W14



Total area (approx.): 51.4 sq. m (553.3 sq. ft)