



Pavilion Terrace, W12

£680 Per week

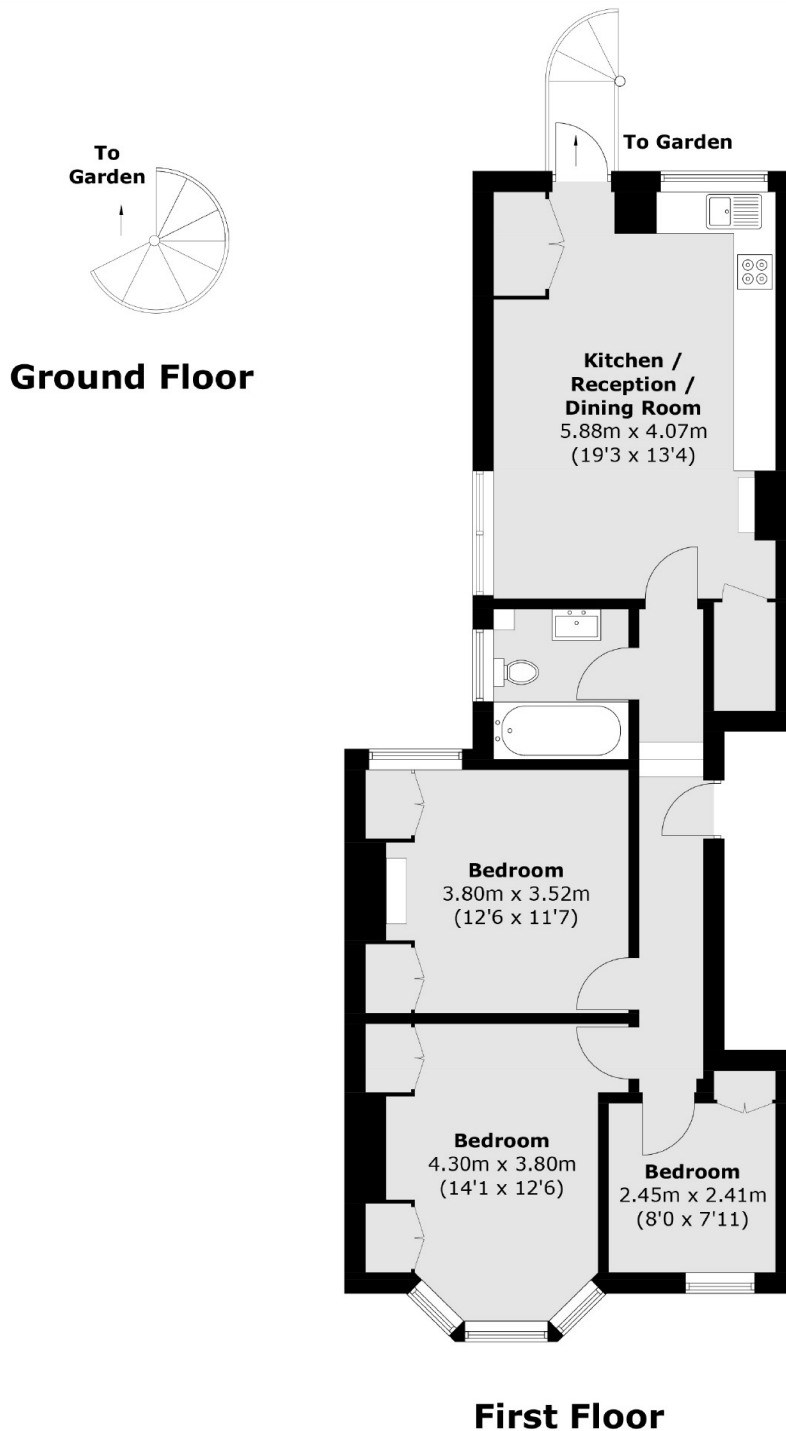
This well presented three apartment is located within a well maintained Victorian conversion. The apartment benefits from a spacious open plan living space with direct access to a patio garden, three bedrooms and a family size bathroom.

Sitting on the borders of North Kensington and Shepherd's Bush with easy access to the A40. There are great transport links from White City station and buses.

Features

- Three Double Bedrooms
- Recently Refurbished
- Neutral Decor
- Central Location
- Double Glazed Throughout
- Ample Storage

Pavilion Terrace, London, W12



Total area (approx.): 73.2 sq. m (787.9 sq. ft)