



Old Forge Mews, W12

£540,000

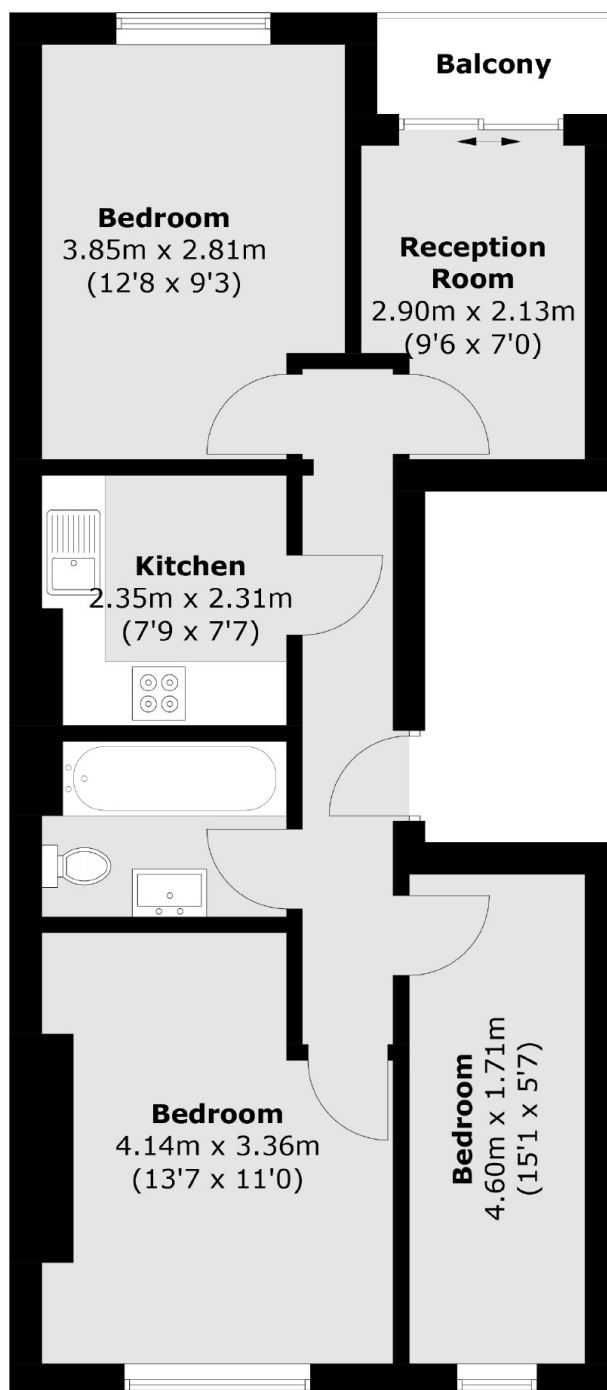
A well presented three bedroom Victorian conversion apartment in the heart of Shepherds Bush. This property has been renovated throughout and features three bedrooms, separate kitchen and living room along with a private balcony.

Old Forge Mews is located between Goldhawk Road and Uxbridge Road with access to Westfield less than three quarters of a mile. The property is in close proximity to Hammersmith & City, Circle and Central lines.

Features

- Three Bedroom
- Private Balcony
- Fully Refurbished
- Great Location
- Separate Kitchen/Living
- Westfield Shopping Centre

Old Forge Mews, London, W12



Total area (approx.): 54.4 sq. m (585.5 sq. ft)
Balcony area (approx.): 2.0 sq. m (21.5 sq. ft)