



## Sinclair Gardens, W14

### £300,000

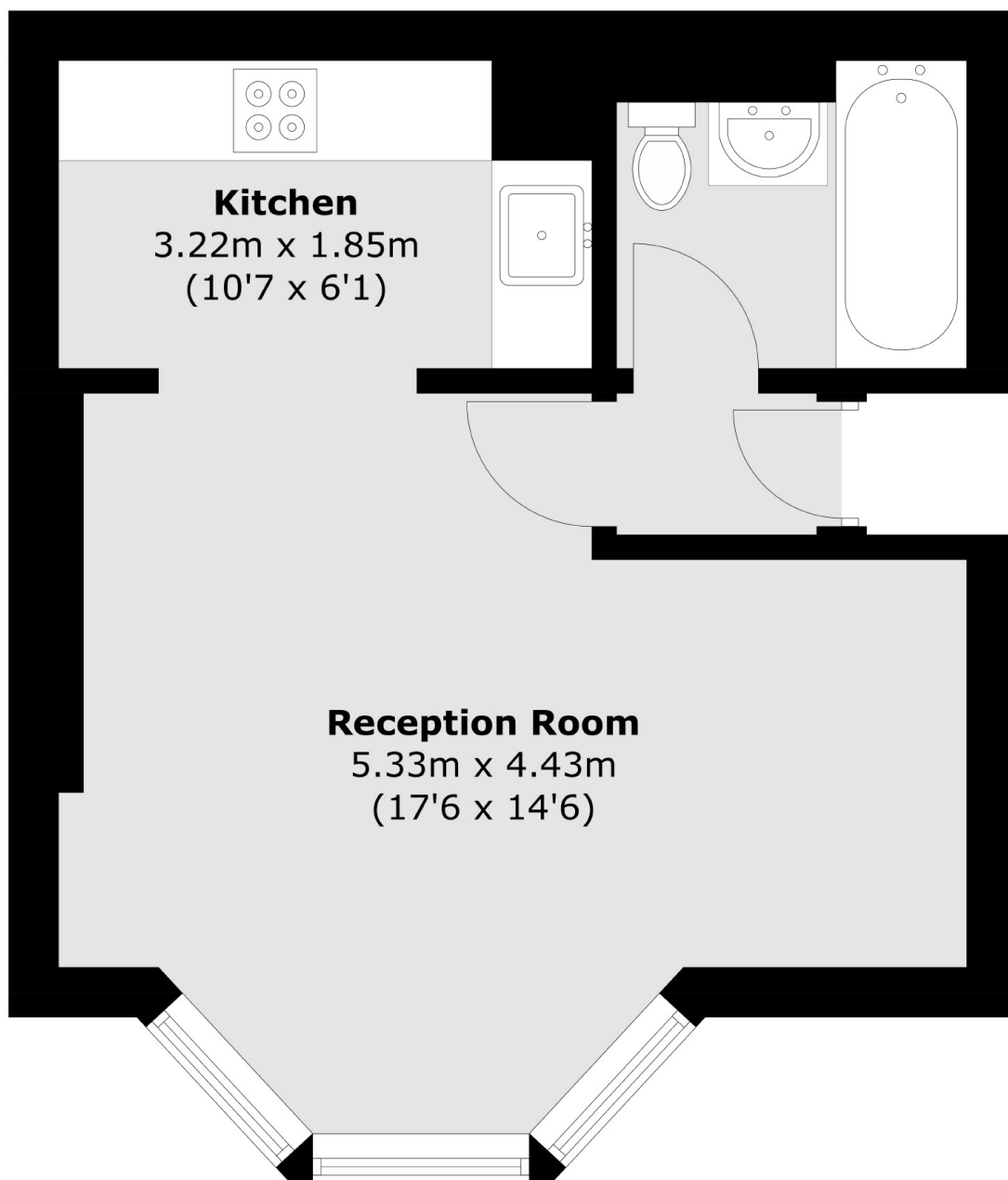
A well presented studio apartment in this Victorian Conversion on popular road in Brook Green. This apartment is being sold chain free and features a semi open plan kitchen and living space and a renovated bathroom.

Sinclair Gardens is located in the sought after area of Brook Green close to the cafes and restaurants. Shepherds Bush Station and Westfield Shopping Centre is nearby along with the green space of Holland Park.

### Features

- Studio Apartment
- Chain Free
- Long Lease
- Recently Refurbished
- Brook Green
- Bay Window

# Sinclair Gardens, London, W14



Total area (approx.): 31.0 sq. m (333.7 sq. ft)