



Frithville Gardens, W12

£1,600,000

A well presented Victorian freehold house on popular tree lined street in the heart of Shepherds Bush. All four floors of this beautiful home have been finished to a high standard.

The property is ideally located on this popular residential road and the nearest Underground stations are Shepherd's Bush Market and Shepherd's Bush.

Features

- Freehold House
- Four Bedrooms
- Private Garden
- Roof Terrace
- Westfield Shopping Centre
- Hammersmith Park



Frithville Gardens, W12

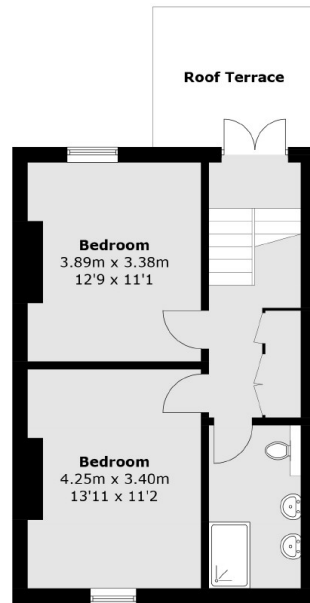
On the ground floor, to the front of the property is a bright double reception room which leads through to a stunning, modern open-plan kitchen. French doors at the back of the kitchen open onto a spacious private garden.

The first floor has two double bedrooms with sash windows and a family bathroom. The second floor has two further bedrooms, a shower bathroom and a secluded roof terrace. There is also the added benefit of a spacious loft room which can be accessed by ladder and can be utilised as a guest room or office.

Frithville Gardens is on the edge of Hammersmith Park which has a gated children's play area, bowling green, tennis courts and five-a-side football pitches. Opposite is the new development of the BBC Television Centre, with many restaurants, cinema, television studios, health club and spa, and a new hotel plus members' club from Soho House. All of this is close to Westfield shopping centre, and all a short walk away.



Frithville Gardens, London, W12



Second Floor



Ground Floor

First Floor

Total area (approx.): 159 sq. m (1,711.5 sq. ft)
Roof Terrace: 8.8 sq. m (94.7 sq. ft)