



## Godolphin Road, W12

£750,000

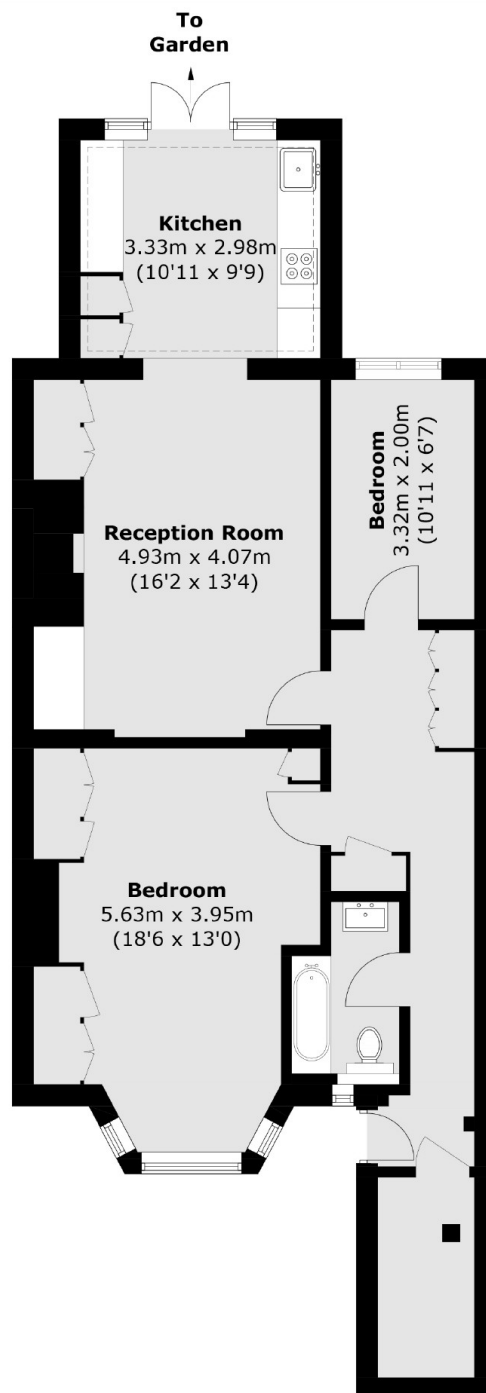
A beautifully presented ground floor Victorian conversion apartment on popular tree lined street. The property has been refurbished to a high standard throughout and has semi open plan kitchen and living space, a very large main bedroom and guest room/office, a family bathroom, west facing private garden and double glazed sash windows.

Godolphin Road is located under a mile from the Westfield shopping centre and the Television Centre. It is also within close range to Askew Village, Chiswick, Hammersmith and local parks.

### Features

- Share Of Freehold
- Two Bedrooms
- Utility Room/Storage
- West Facing Garden
- Own Entrance
- No Chain

# Godolphin Road, London, W12



Total area (approx.): 79.5 sq. m (855.7 sq. ft)

## Dexters

Shepherds Bush and Brook Green  
53 Shepherds Bush Green  
London  
W12 8PS  
Sales  
020 8740 2900

Energy Rating: C. We aim to make our particulars both accurate and reliable. However they are not guaranteed; nor do they form part of an offer or contract. If you require clarification on any points then please contact us, especially if you're traveling some distance to view. Please note that appliances and heating systems have not been tested and therefore no warranties can be given as to their good working order.

 **RICS** | Regulated  
Estate Agent  
and Letting Agent

[dexters.co.uk](http://dexters.co.uk)