



## Godolphin Road, W12

£780,000

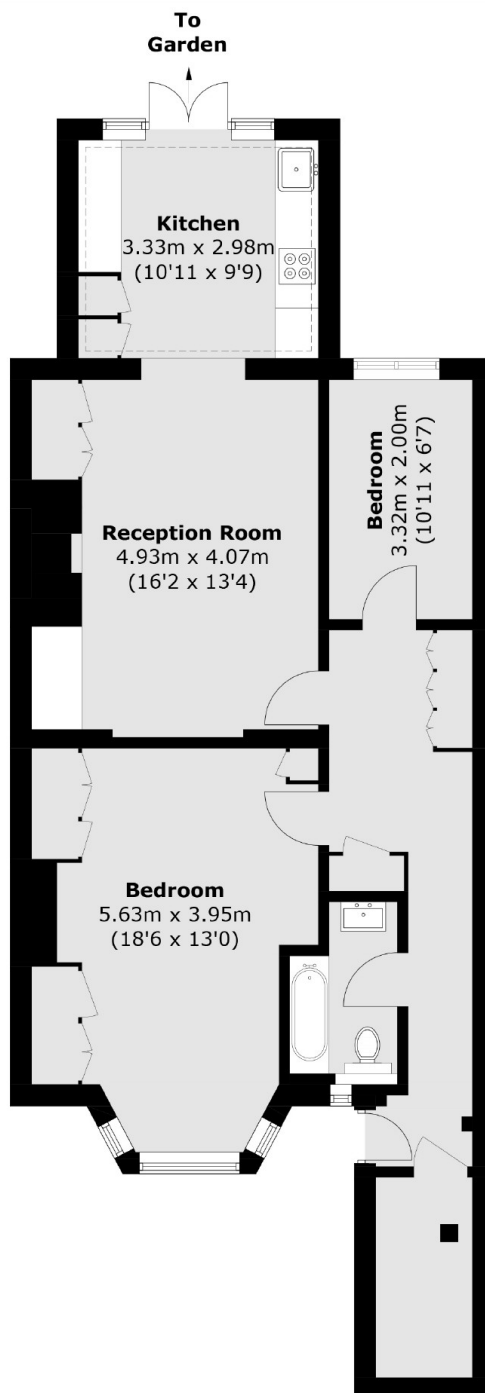
A beautifully presented ground floor Victorian conversion apartment on popular tree lined street. The property has been refurbished to a high standard throughout and has semi open plan kitchen and living space, a very large main bedroom and guest room/office, a family bathroom, west facing private garden and double glazed sash windows.

Godolphin Road is located under a mile from the Westfield shopping centre and the Television Centre. It is also within close range to Askew Village, Chiswick, Hammersmith and local parks.

### Features

- Share Of Freehold
- Two Bedrooms
- Utility Room/Storage
- West Facing Garden
- Own Entrance
- No Chain

# Godolphin Road, London, W12



Total area (approx.): 79.5 sq. m (855.7 sq. ft)