



Ingersoll Road, W12

£1,400,000

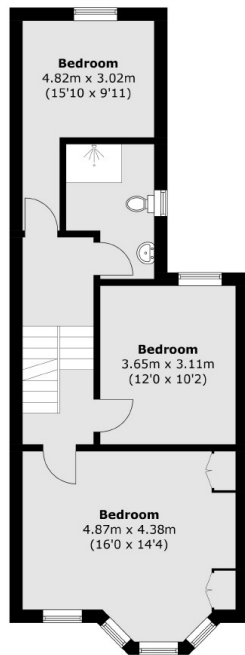
A brilliant opportunity has become available on a highly sought after road in Shepherds Bush. This six bedroom freehold house, currently let as a licenced HMO, has the potential to become an incredible family home with potential to extend (STPP).

Ingersoll Road is a quiet, tree lined street within the popular 'U-Bend' close to the local amenities of the Uxbridge Road. Both the green spaces of Hammersmith and Holland Park are a short walk away as is access into Central London.

Features

- Over 1900sqft
- Three Floors
- Private Garden
- Potential to Extend (STPP)
- Quiet Location
- Additional Outdoor Shed

Ingersoll Road, London, W12

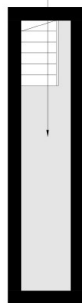


First Floor

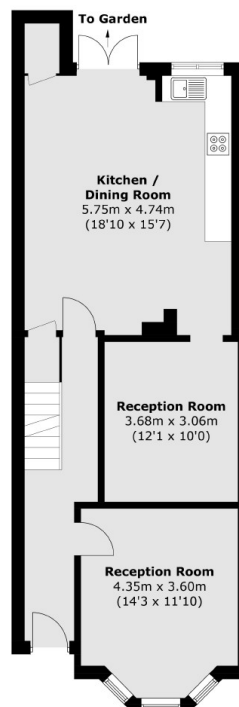


Second Floor

Cellar
6.21m x 1.14m
(20'4" x 3'9")



Basement



Ground Floor

Total area (approx.): 177.0 sq. m (1,905.1 sq. ft)
(Including Basement & Excluding Eaves)