



Lakeside Road, W14

£699,950

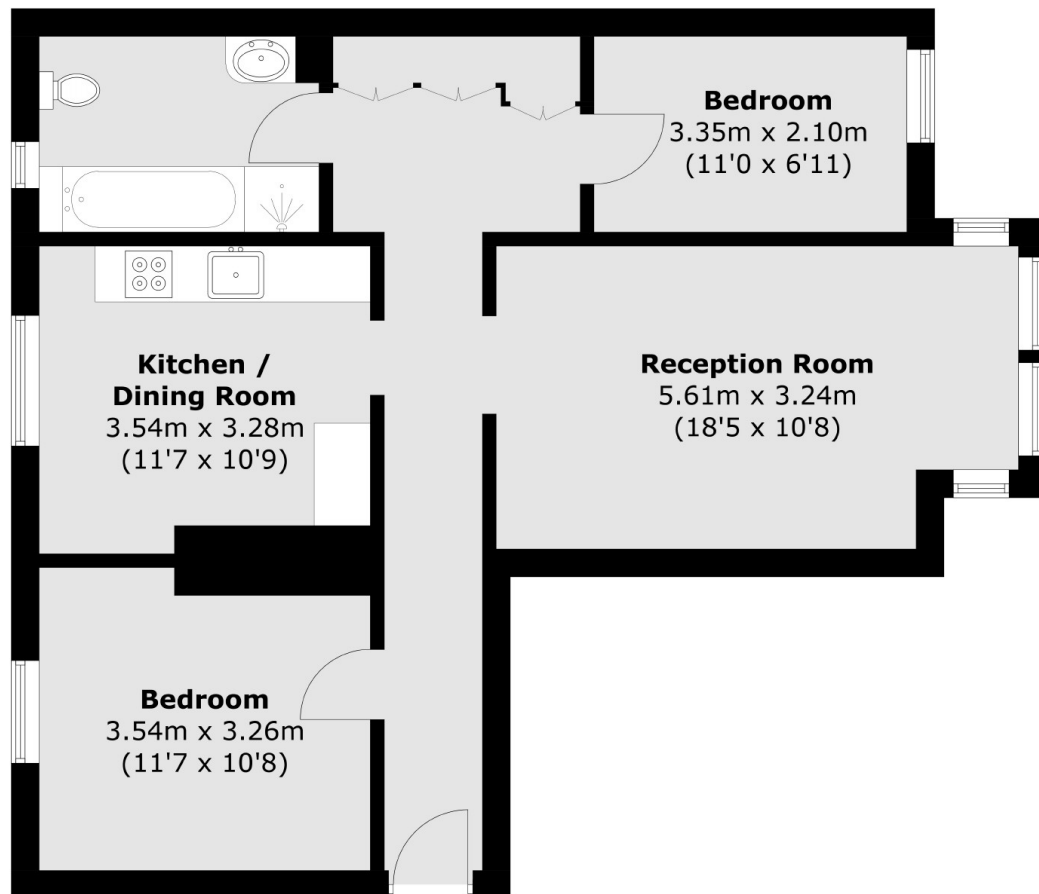
A beautifully presented two bedroom apartment in the heart of Brook Green. This spacious property offers large living space with a separate kitchen and living room, two double bedrooms, a family bathroom, plenty of storage and a shared south facing garden.

Lakeside Road is just over a quarter of a mile from Shepherds Bush Underground Station and Westfield Shopping Centre.

Features

- Two Bedrooms
- High Finish Throughout
- Separate Kitchen/Living
- Shared Garden
- No Chain
- Brook Green

Lakeside Road, London, W14



Total area (approx.): 70.6 sq. m (759.9 sq. ft)