



Macfarlane Road, W12

£1,250,000

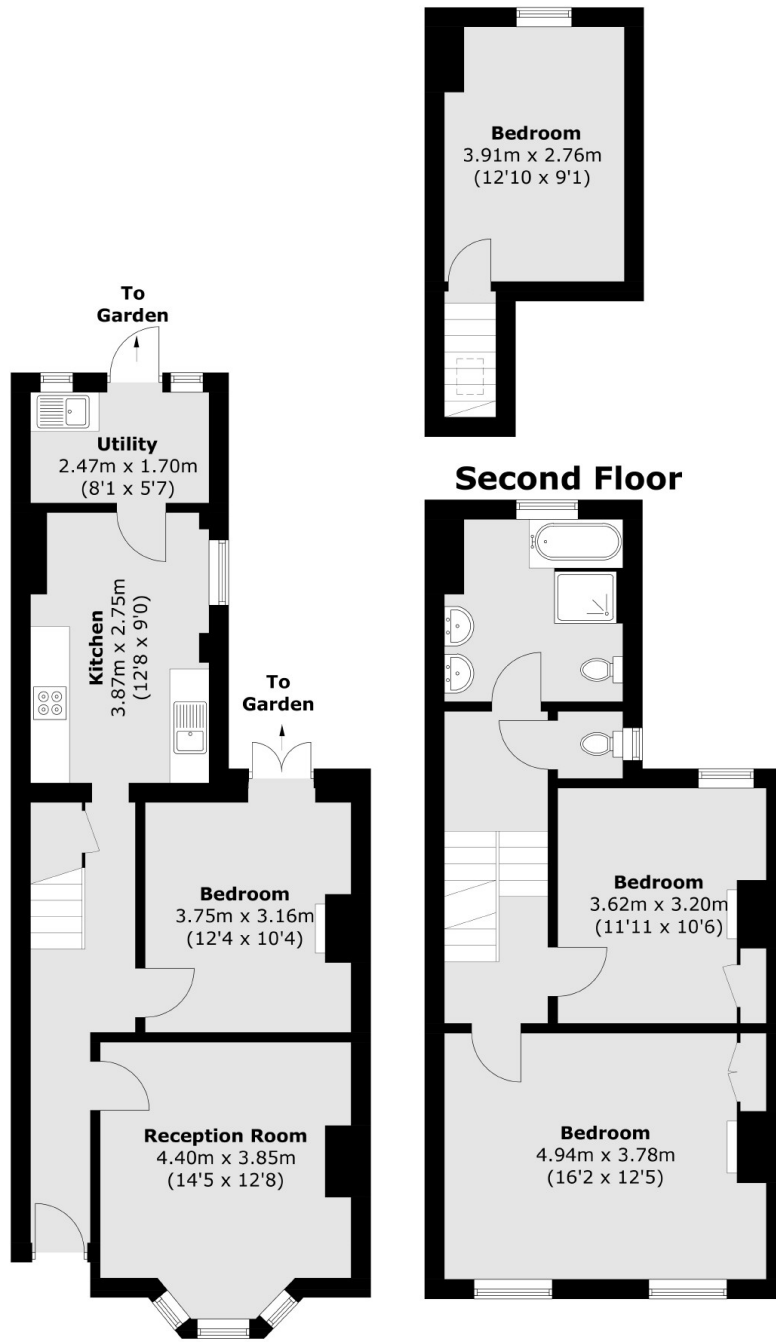
A well presented Victorian freehold house on popular tree lined street. The property has four bedrooms and the potential to extend further into a large loft (STPP). This impressive space would make a great investment property or make a lovely family home.

Macfarlane Road is located close to the local amenities of Westfield Shopping Centre and walking distance to White City/Television Centre and also Hoxton Hotel. The green space and flower gardens of Hammersmith Park are a short walk away.

Features

- Freehold House
- Four Bedrooms
- Potential to Extend (STPP)
- Westfield Shopping Centre
- Hammersmith Park
- Chain Free

Macfarlane Road, London, W12



Ground Floor

First Floor

Total area (approx.): 115.2 sq. m (1,240.0 sq. ft)