



Percy Road, W12

£695,000

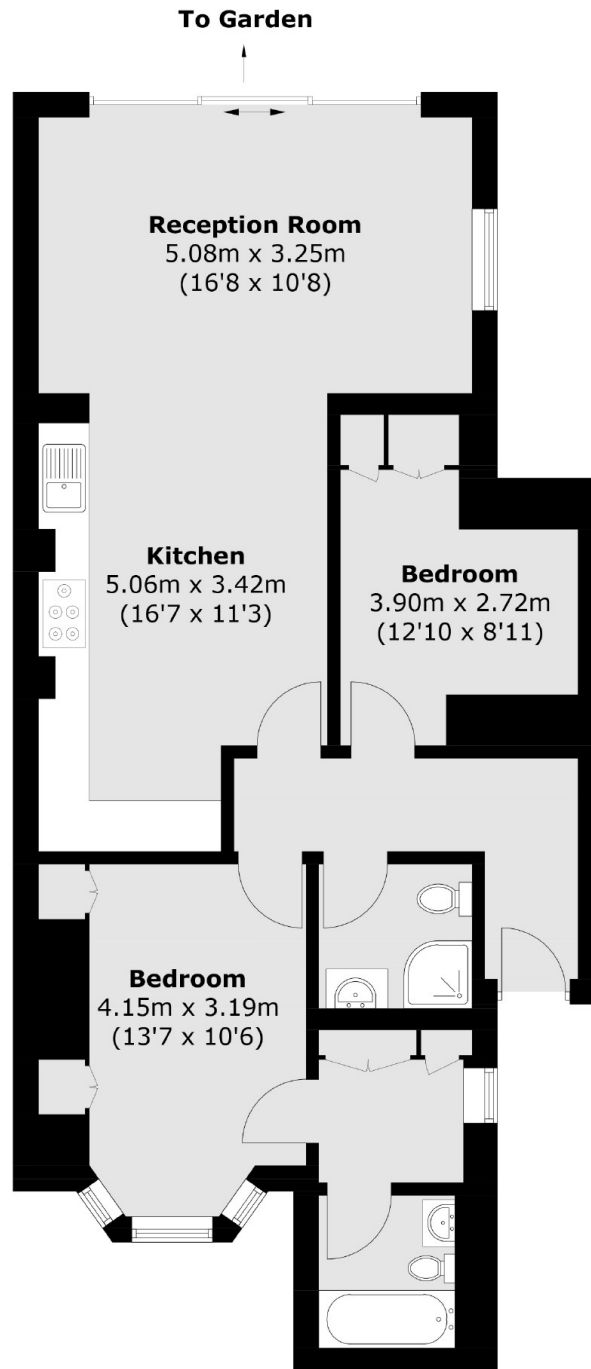
A beautifully presented two bedroom Victorian conversion which has been modernised throughout. The property has open plan kitchen and living space with bi-folding doors leading into a west facing landscaped garden, two double bedrooms and two bathrooms. The property also benefits from underfloor heating.

Percy Road is a popular residential road within walking distance to the beautiful Ravenscourt Park and the well-considered Greenside Primary School. Artisan shops, local pubs and the cafés of Askew Village are just a stone's throw away.

Features

- Share of Freehold
- Two Double Bedroom
- West Facing Garden
- Victorian Conversion
- Own Entrance
- Two Bathrooms

Percy Road, London, W12



Total area (approx.): 74.9 sq. m (806.2 sq. ft)