



Askew Road, W12

£426 Per week

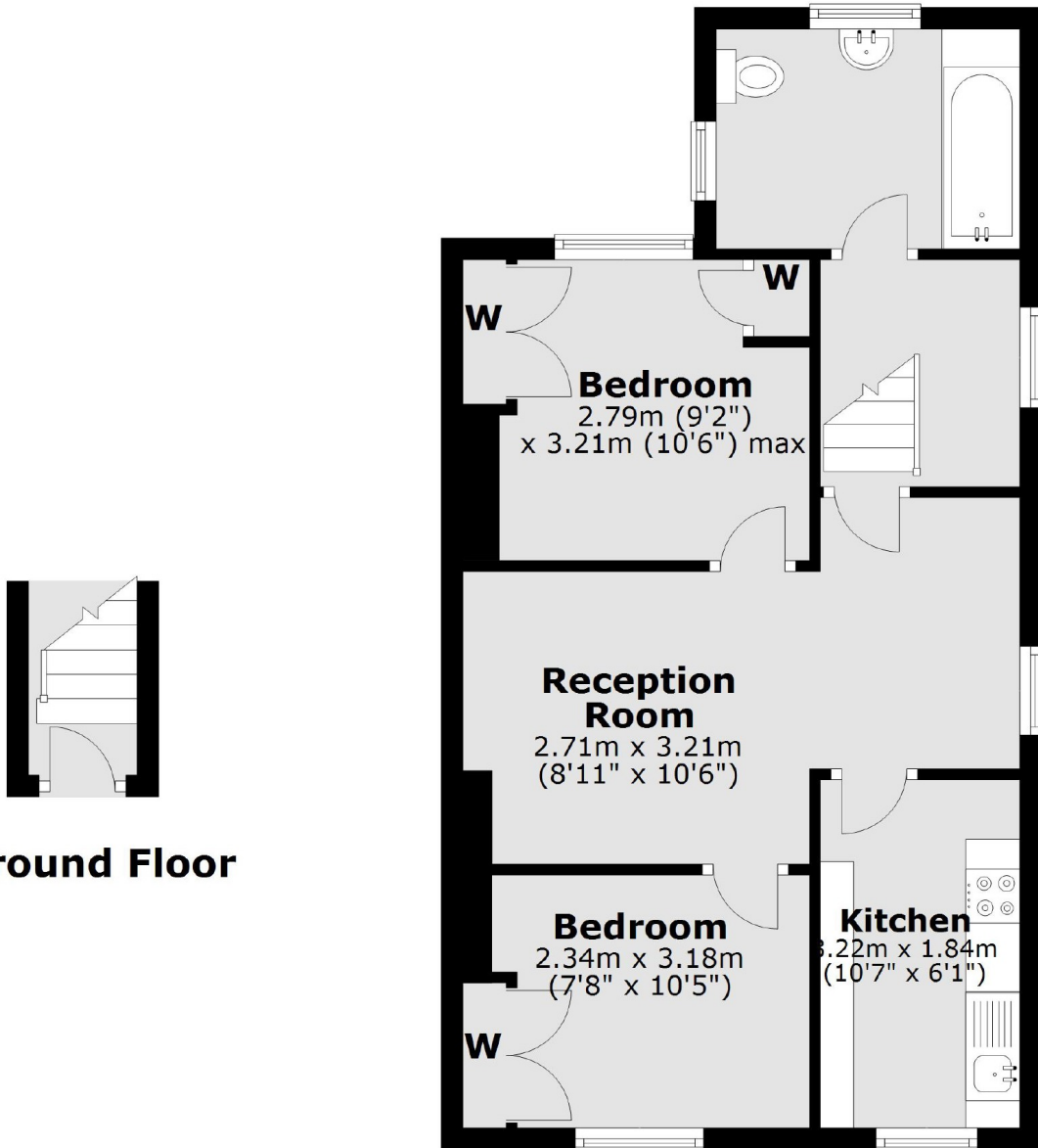
A large and bright two bedroom first floor flat located in Askew Village. The property has two double bedrooms, making it perfect for couples or sharers.

Askew Road offers easy access to the A40/M40 including the various transport options available to Chiswick, Hammersmith and Shepherds Bush.

Features

- Askew Village
- Two Double Bedrooms
- First Floor Flat
- Furnished
- Separate Kitchen
- Ample Storage

Askew Road,
London, W12



Ground Floor

First Floor

Total area: approx. 48.9 sq. metres (526.5 sq. feet)