



## Vespan Road, W12

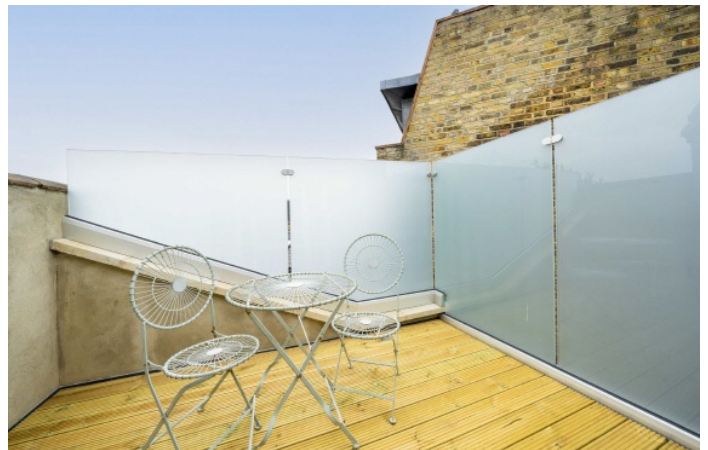
£895,000

A wonderfully bright and spacious split level flat with your own private entrance in the heart of Askew Village. This property has three bedrooms, a private terrace and has been renovated to a high standard throughout.

Vespan Road is a quiet, residential road in the sought after area of Askew Village. The green space of Ravenscourt Park is a short walk away as are the local pubs and brunch spots.

### Features

- Own Entrance
- Split Level
- Share Of Freehold
- Immaculately Finished
- Idyllic Street
- South Facing Terrace



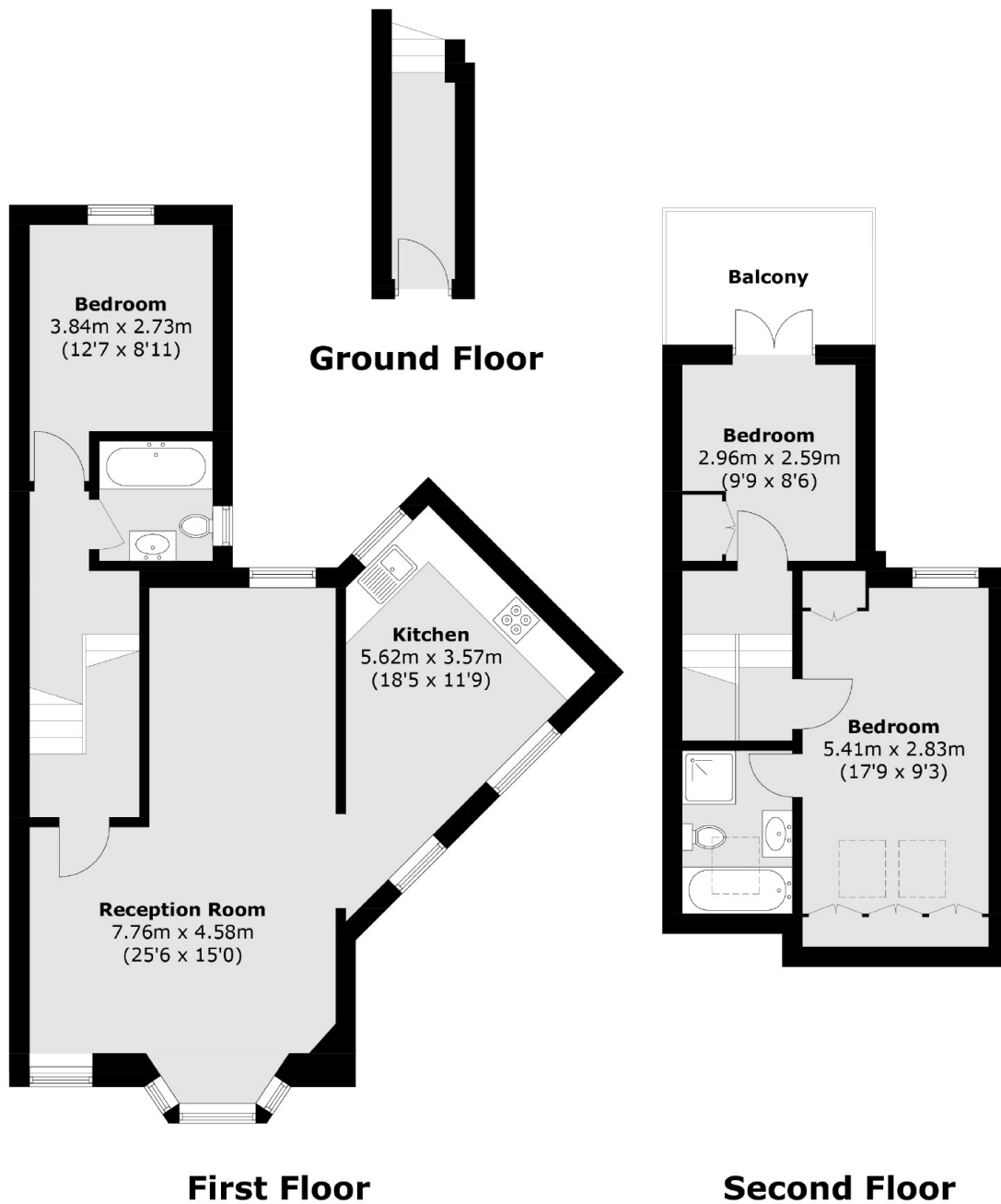
## Vespan Road, W12

Set over the ground, first and second floor is this elegantly designed property. On the first floor you will find a guest bedroom with built in storage, a modern bathroom with under floor heating. This follows into a fantastic double reception room leading onto a spacious kitchen with brand new integrated appliances.

Up another set of stairs you will find a further guest bedroom with direct access onto a south facing private terrace. The final stairs up lead onto the principal bedroom with en-suite bathroom. This flat has wide hallways and high ceilings which bring in ample natural light, it has been renovated to a high standard throughout and would make an incredible home for anyone that buys it.



# Vespan Road, London, W12



Total area (approx.): 98.3 sq. m (1,058.1 sq. ft)  
Balcony: 6.2 sq. m (66.7 sq. ft)