



## Stanlake Road, W12

£1,595,000

A charming end of terrace four bedroom family house. This property has separate, large entertaining and dining areas, a spacious kitchen and a private garden, it has been tastefully refurbished throughout.

Stanlake Road is an attractive, residential tree lined street moments from all the shops, bars and restaurants of Shepherds Bush. The ever evolving Westfield shopping Centre and White City Soho House are only a short walk away.

### Features

- Four Bedroom
- Freehold
- Period Features
- Private Garden
- No Chain
- Catchment For St. Stephens Primary School



## Stanlake Road, W12

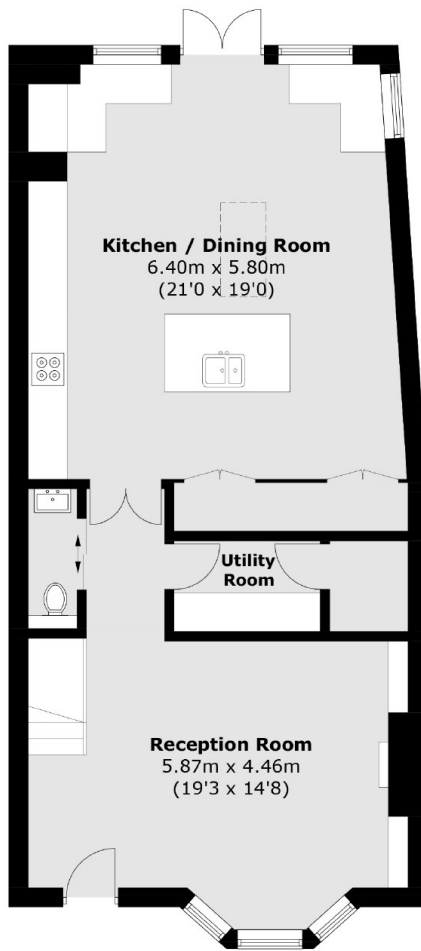
This fabulous Victorian property offers plenty of character throughout. On the ground floor you will find a large reception room with wonderful high ceilings and period features. Through the hall, there is a guest W/C and separate utility space leading to a light and airy extended kitchen dining area with island and french doors opening out to the private garden.

On the first floor you have the principle bedroom with large walk-in wardrobe and en-suite bathroom. There are two further double bedrooms and family bathroom on this floor.

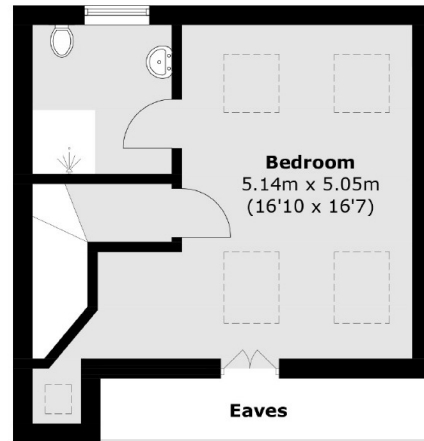
Going up onto the second floor there is a spacious double bedroom with en-suite bathroom with potential to extend further (STPP).



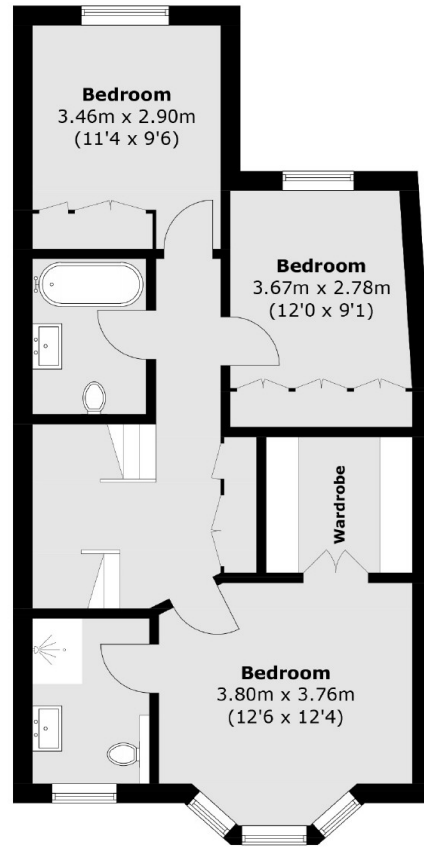
# Stanlake Road, London, W12



**Ground Floor**



**Second Floor**



**First Floor**

Total area (approx.): 167.2 sq. m (1,799.7 sq. ft)  
(Excluding Eaves)