



Cromwell Grove, W6

£525,000

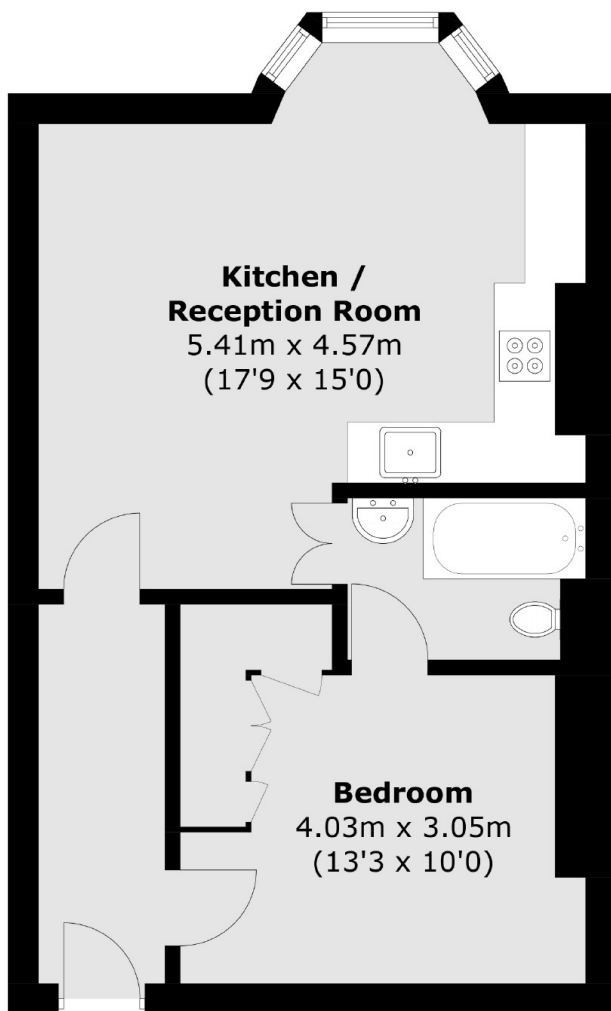
A bright and spacious one bedroom apartment on the first floor of this Victorian conversion. This beautiful home has an open plan kitchen and living space with high ceilings throughout and sash windows, a main bedroom with built-in storage, bathroom and an office/guest room leading to a south facing terrace.

Cromwell Grove is a residential, tree lined street on a popular road in Brook Green. It is located close to the cafes and restaurants of Brackenbury Village and fantastic schools of Brook Green.

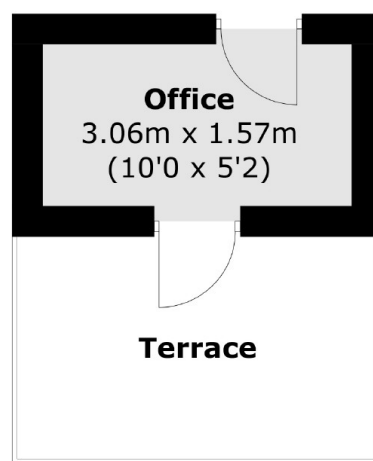
Features

- One Bedroom
- Victorian Conversion
- South Facing Terrace
- Office/Guest Room
- High Ceilings
- Brook Green

Cromwell Grove, London, W6



First Floor



First Floor

Total area (approx.): 52.5 sq. m (565.1 sq. ft)
Terrace (approx.): 7.8 sq. m (83.9 sq. ft)