



## Blythe Road, W14

### £525,000

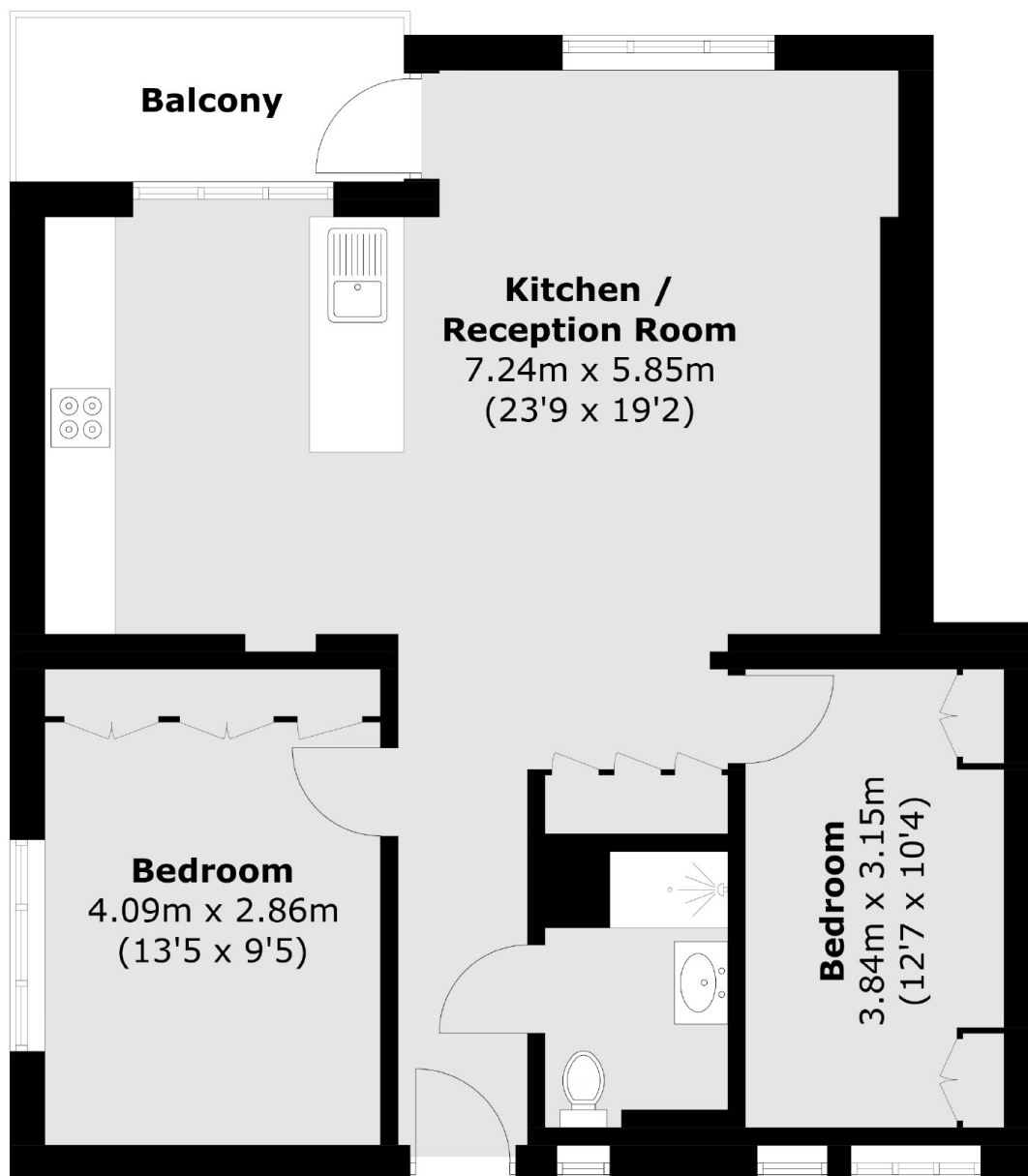
A beautiful two bedroom apartment on the fourth floor of a purpose built block. The property has been reconfigured to have a large open-plan kitchen, two double bedrooms with built in storage, bathroom and south facing private balcony.

Blythe Road is located in the popular Brook Green area with access for various transport and shopping amenities including Kensington Olympia and Shepherd Bush stations.

### Features

- Two Bedroom
- South Facing Balcony
- Bespoke Kitchen
- Integrated Appliances
- Silestone Quartz Countertops
- Communal Garden

# Blythe Road, London, W14



Total area (approx.): 65.7 sq. m (707.2 sq. ft)  
Balcony area : 4.6 sq. m (49.5 sq. ft)

## Dexters

Shepherds Bush and Brook Green  
53 Shepherds Bush Green  
London  
W12 8PS  
Sales  
020 8740 2900

Energy Rating: C. We aim to make our particulars both accurate and reliable. However they are not guaranteed; nor do they form part of an offer or contract. If you require clarification on any points then please contact us, especially if you're traveling some distance to view. Please note that appliances and heating systems have not been tested and therefore no warranties can be given as to their good working order.

 **RICS** | Regulated  
Estate Agent  
and Letting Agent

[dexters.co.uk](https://www.dexters.co.uk)