

## Blythe Road, W14

£550,000

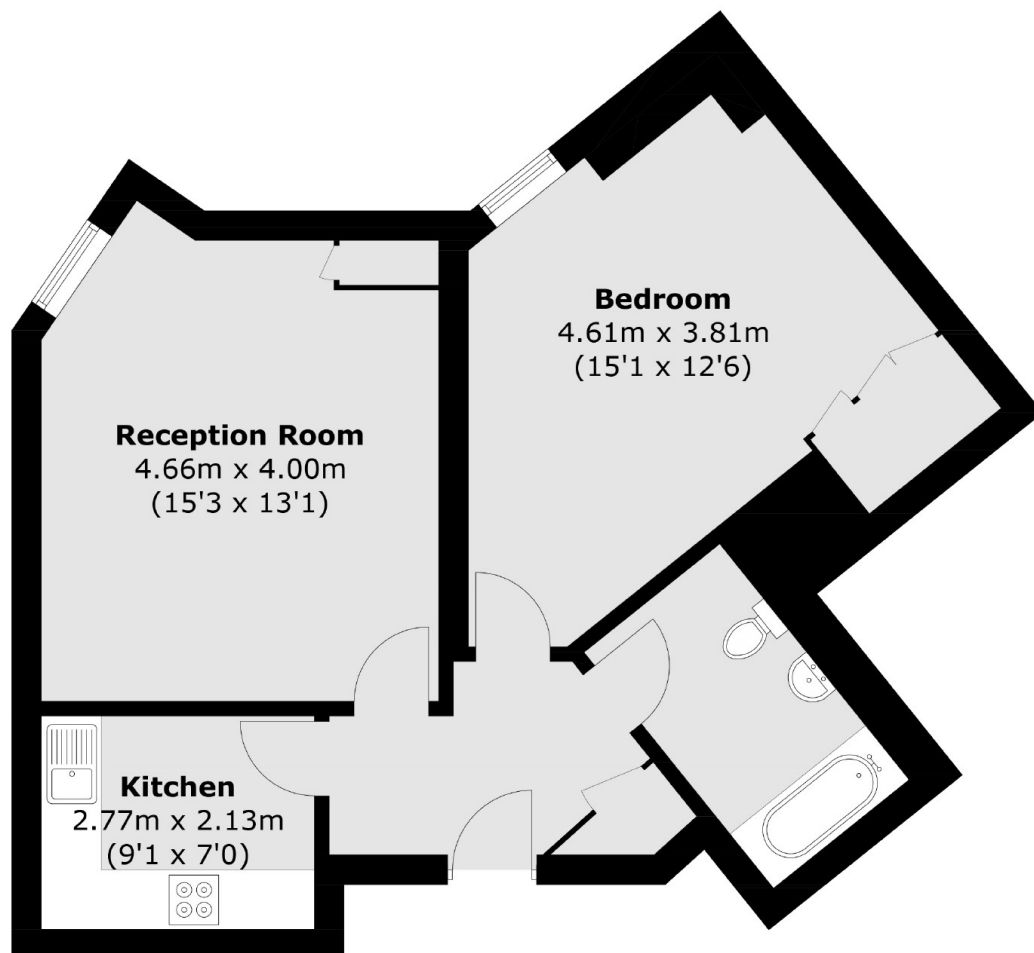
A one bedroom apartment in a popular complex in West Kensington. This property has a spacious reception room and a separate kitchen, double bedroom and bathroom. The building has a 24 hour concierge, a gym, sauna, swimming pool and squash court.

Kensington West is on Blythe Road which is very close to the bustling Kensington Olympia and Kensington High Street. Hammersmith is also on your doorstep.

### Features

- One Bedroom
- Swimming Pool
- Residents Gym
- 24hr Concierge
- Lift Service
- Kensington Olympia

# Blythe Road, London, W14



Total area (approx.): 58.3 sq. m (627.5 sq. ft)