

## Blythe Road, W14

### £580,000

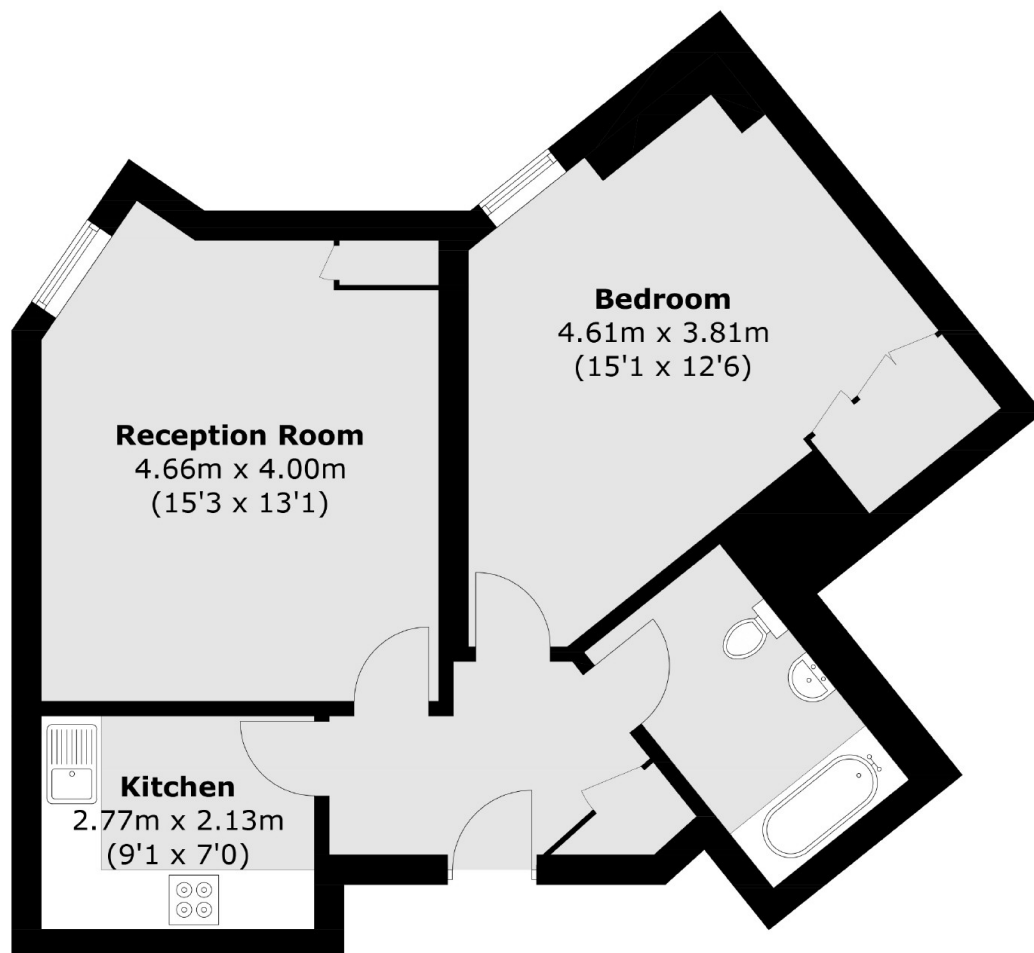
A one bedroom apartment in a popular complex in West Kensington. This property has a spacious reception room and a separate kitchen, double bedroom and bathroom. The building has a 24 hour concierge, a gym and swimming pool and squash court.

Kensington West is on Blythe Road which is very close to the bustling Kensington Olympia and Kensington High Street. Hammersmith is also on your doorstep.

### Features

- One Bedroom
- Swimming Pool
- Residents Gym
- 24hr Concierge
- Lift Service
- Kensington Olympia

# Blythe Road, London, W14



Total area (approx.): 58.3 sq. m (627.5 sq. ft)