



Askew Road, W12

£700,000

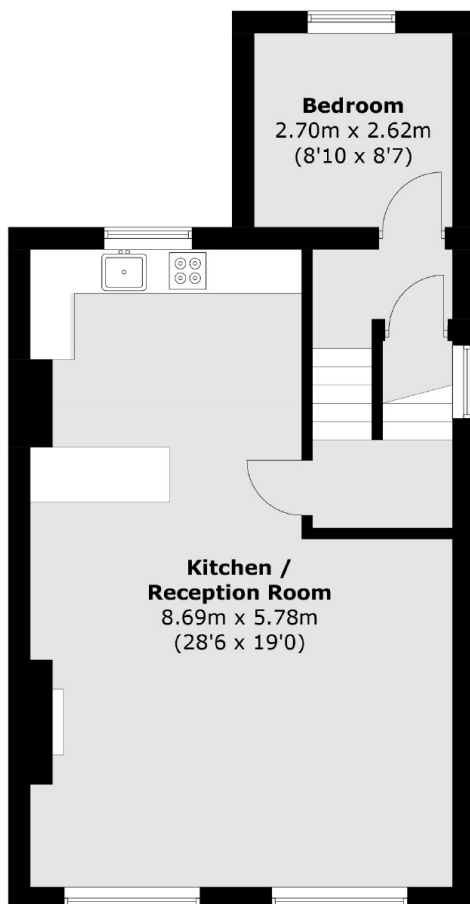
A spacious three bedroom split level apartment on the top floor of this Victorian conversion. The property has a very large open plan kitchen and living space, three bedrooms and a family bathroom.

Situated in the heart of the sought after area of Askew Village. The local amenities of Uxbridge and Askew Road are a short walk away as well as having Wendell Park nearby.

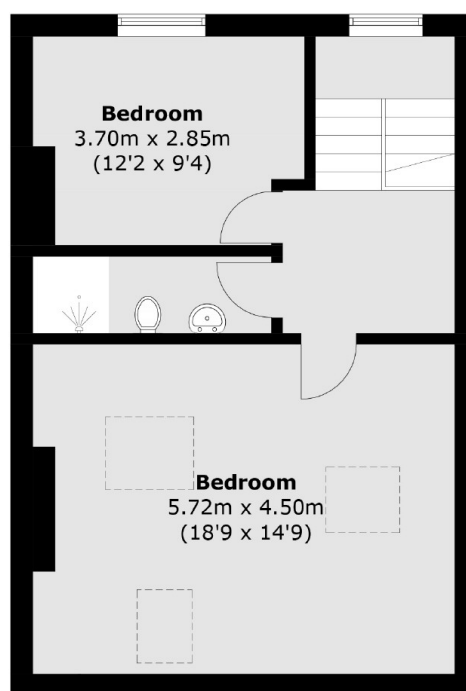
Features

- Three Bedrooms
- Split Levels
- Share Of Freehold
- Chain Free
- Askew Village
- Potential For Terrace

Askew Road, London, W12



First Floor



Second Floor

Total area (approx.): 108.0 sq. m (1162.5 sq. ft)