

Wood Lane, W12

£650,000

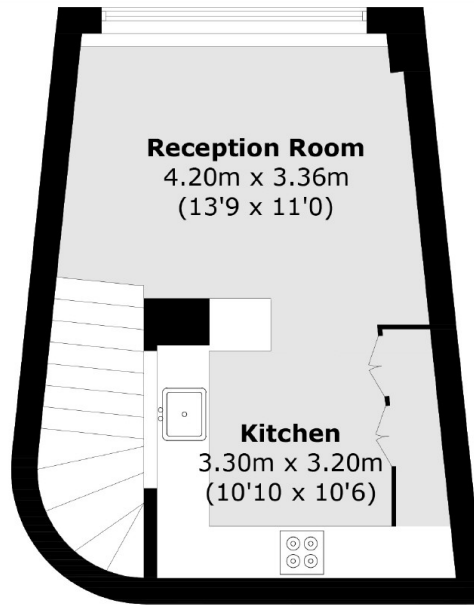
This unique one bedroom apartment is split over two levels with high ceilings and a wonderfully wide window overlooking the iconic Helios statue. The modern, open plan kitchen is situated on the upper floor offering great entertaining space.

Television Centre has easy access to London's vast established transport network. The historic forecourt offers many restaurants, cinema, television studios, health club, spa and a Soho House. Ideally located with access to the open space of Hammersmith Park.

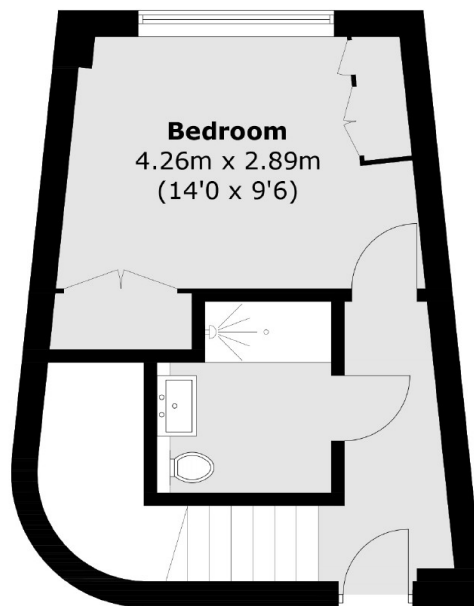
Features

- One Bedroom Duplex Flat
- High Quality Interiors
- 24 Hour Concierge
- Iconic Grade II Listed Building
- Access To Gym/Swimming Pool
- White City

Wood Lane, London, W12



Second Floor



First Floor

Total area (approx.): 53.1 sq. m (571.5 sq. ft)