



Bulwer Street, W12

£500,000

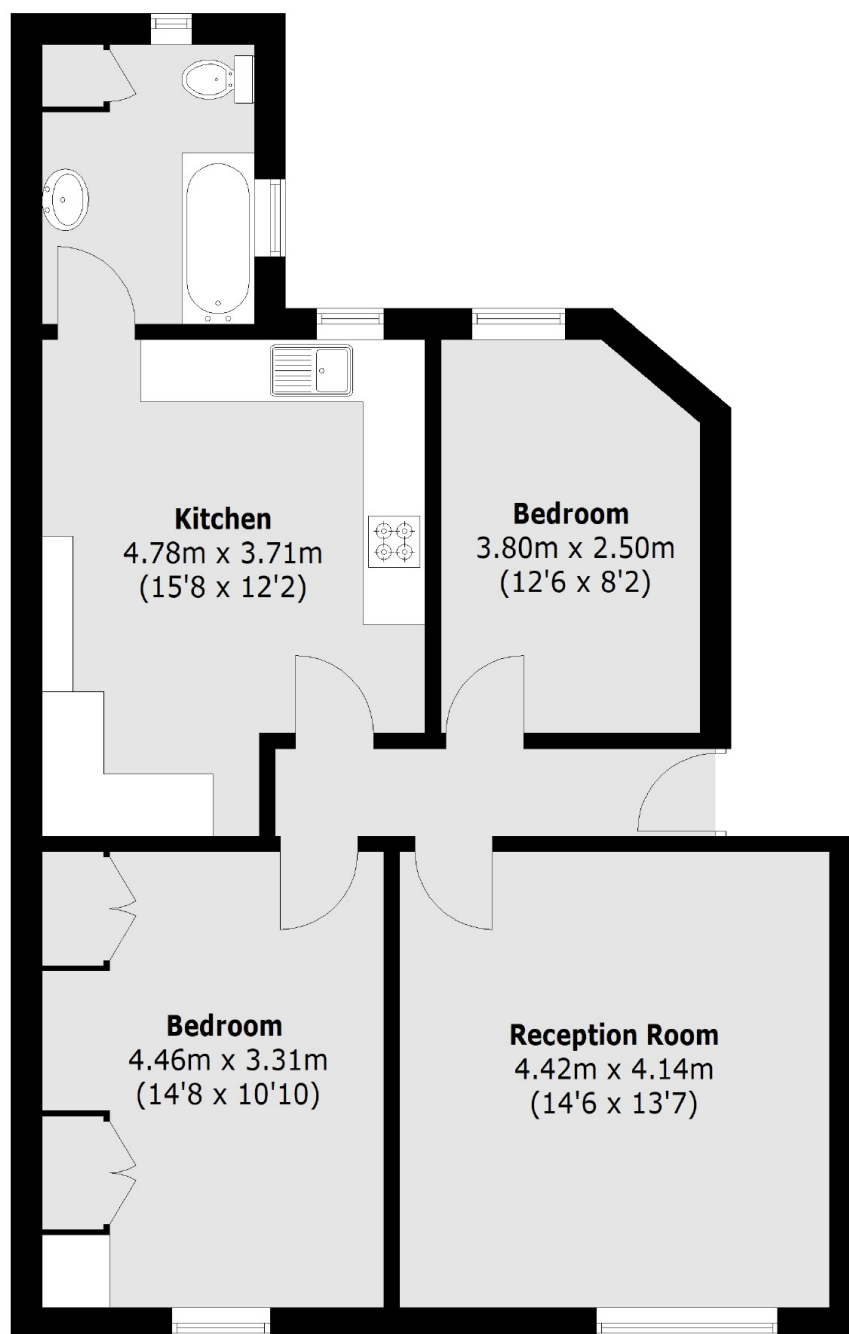
A bright and spacious two bedroom flat on the third floor in the heart of Shepherds Bush. This property has separate kitchen and living rooms, two double bedrooms and family bathroom.

Bulwer Street is located moments from the local amenities of Westfield Shopping Centre. Access into Central London is a stones throw away.

Features

- Two Bedrooms
- Separate Kitchen/Living
- Central Location
- Shared Terrace Garden
- Sash Windows
- Westfield Shopping Centre

Bulwer Street, London, W12



Total area (approx.): 70.5 sq. m (758.9 Sq. ft)