



Holland Road, W14

£525,000

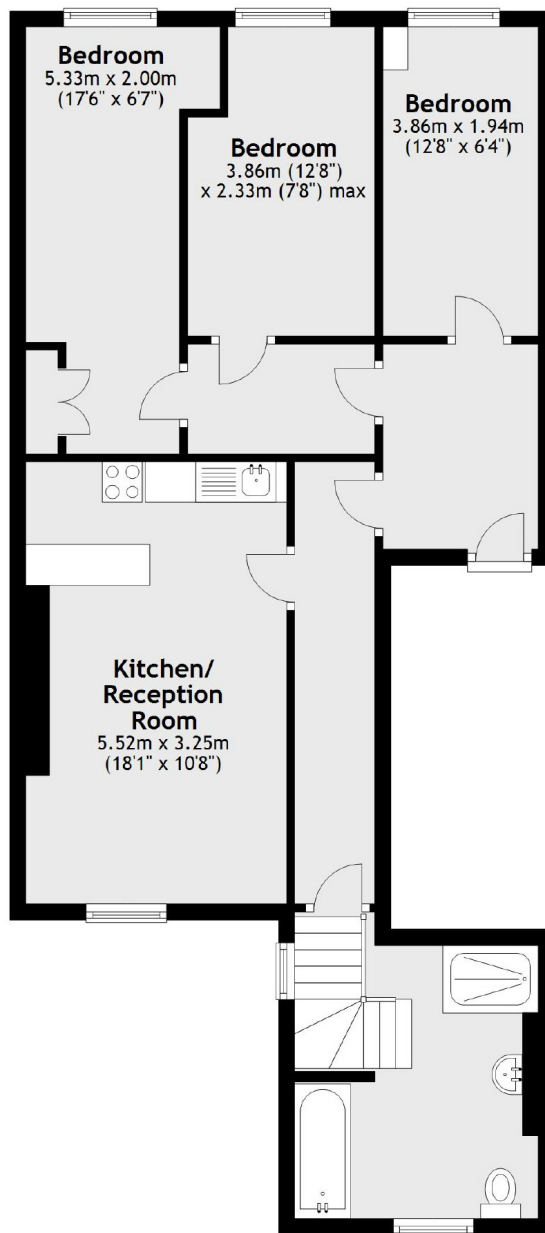
A three bedroom lateral flat located on a popular tree lined street. This Victorian conversion has open plan kitchen living and offers a lot of space. This property would make a great investment opportunity.

Holland Road is well positioned within the Royal Borough of Kensington and Chelsea, close to transport links and shopping facilities of Holland Park, Westfield and High Street Kensington.

Features

- Three Bedrooms
- Victorian Conversion
- Open Plan Living
- Sash Windows
- No Chain
- RBKC

Holland Road, London, W14



Total area: approx. 71.8 sq. metres (772.8 sq. feet)