



Sinclair Road, W14

£575,000

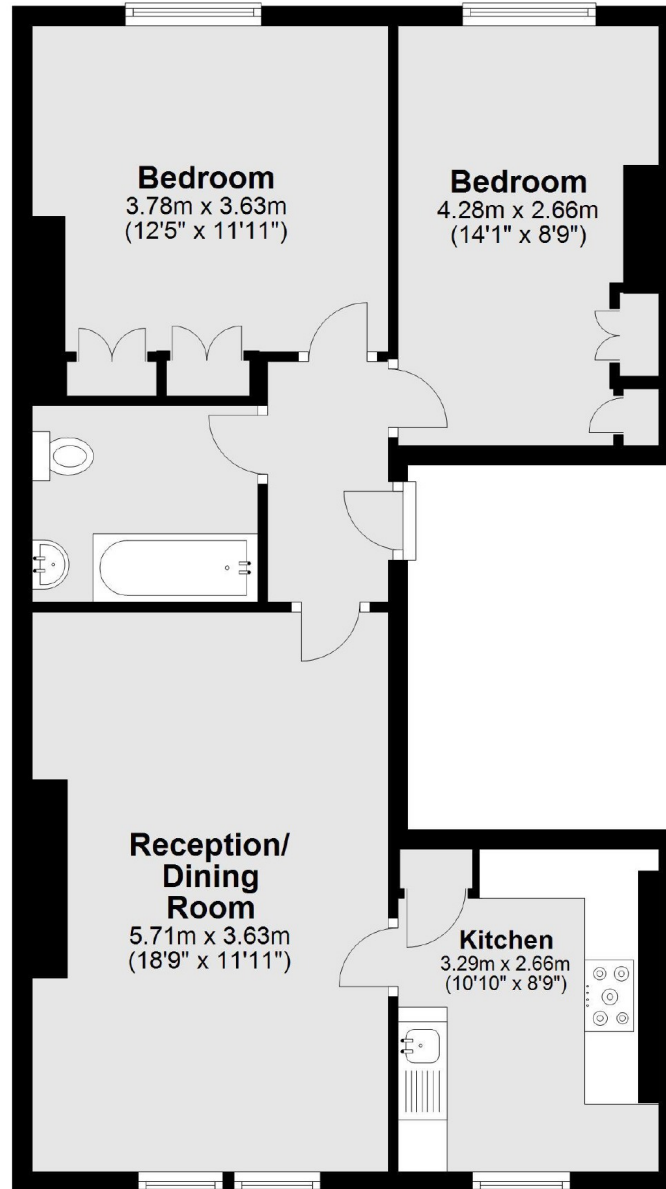
A spacious flat with two double bedrooms on the second floor of this Victorian Conversion. This property has high ceilings, plenty of natural light and a separate kitchen; it would make a great home or investment.

Sinclair Road is located in the sought after area of Brook Green close to the cafes and restaurants. Westfield Shopping Centre is nearby along with the green space of Holland Park.

Features

- Two Bedrooms
- Lateral Living
- Share Of Freehold
- Second Floor
- Separate Kitchen
- Brook Green

Sinclair Road, London, W14



Total area: approx. 63.3 sq. metres (681.7 sq. feet)