



Trebovir Road, SW5

£750 Per week

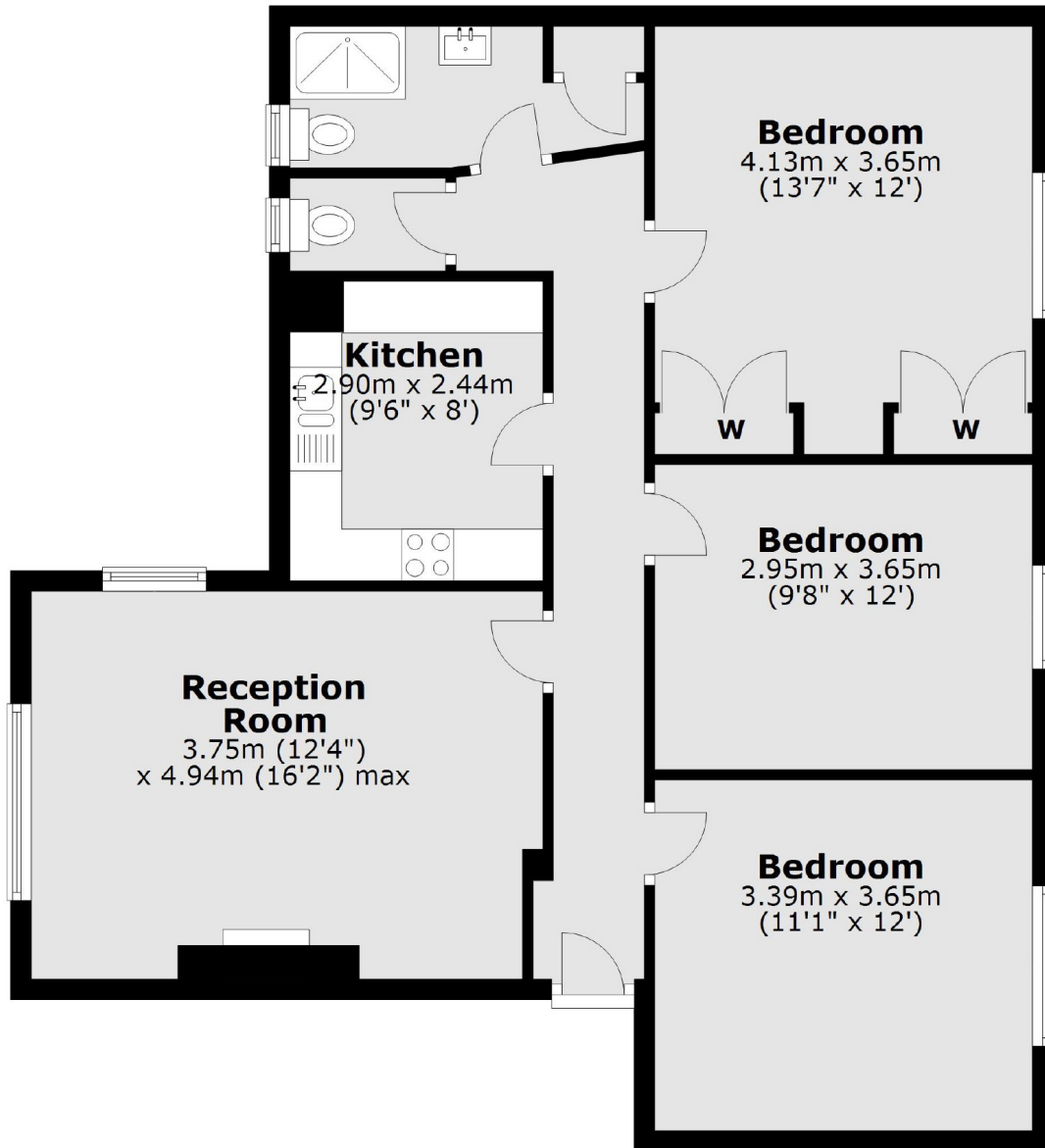
A spacious and neutrally decorated three double bedroom apartment based within a purpose built building in the heart of Earls Court, with wood flooring throughout and separate WC.

Trebovir Road is conveniently located between Earls Court Road and Warwick Road. Allowing for easy access to Heathrow via the A4 and many restaurants within walking distance.

Features

- Three Double Bedrooms
- Wood Floors Throughout
- Separate Kitchen
- Secondary Glazing
- Modern Bathroom
- Separate WC

Trebovir Road,
London, SW5



Second Floor

Total area: approx. 80.7 sq. metres (868.2 sq. feet)