

Lexham Gardens, W8

£923 Per week

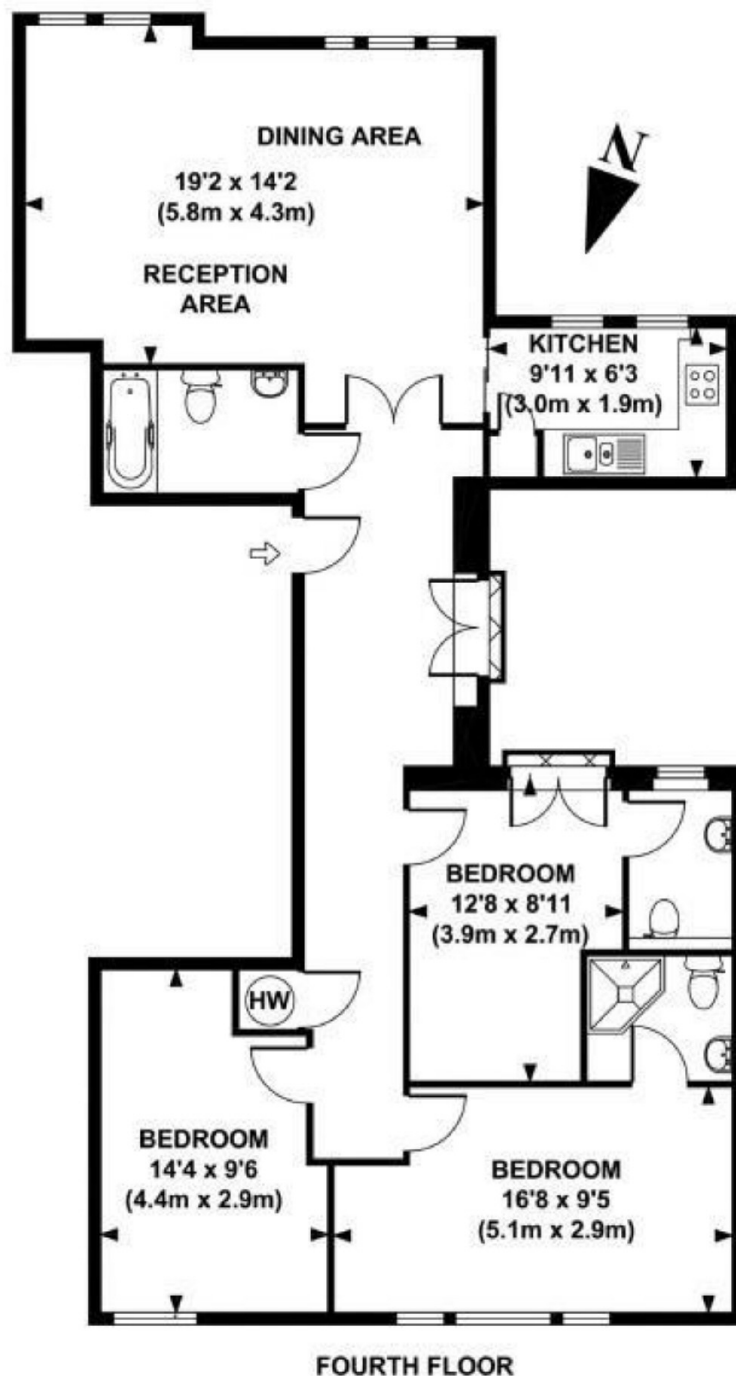
A large three double bedroom apartment based within the sought-after Lexham Gardens, Kensington. Benefits also include dining space, a separate kitchen and two bathrooms with a separate WC.

Lexham Gardens is perfectly located between Gloucester Road, Earls Court and High Street Kensington. Meaning you are well connected and spoilt for options when it comes to restaurants and shops.

Features

- Three Double Bedrooms
- Two Bathrooms & WC
- Separate Kitchen
- Over 1,000sqft
- Fourth Floor with Lift
- Furnished

Lexham Gardens, London, W8



FOURTH FLOOR

APPROX. GROSS INTERNAL FLOOR AREA 1004 SQ FT / 93 SQ M