



## West Cromwell Road, SW5

£600 Per week

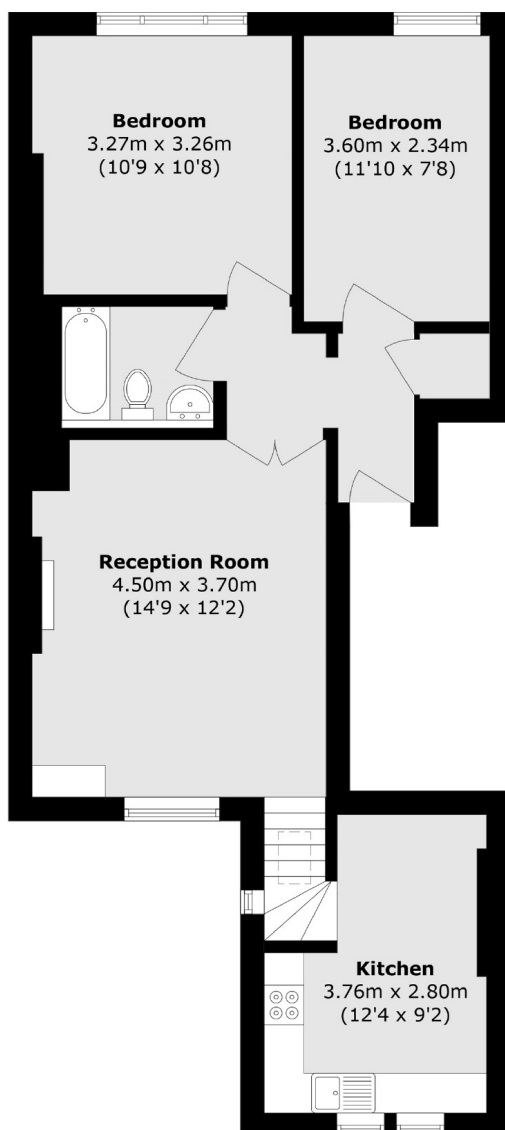
A bright and spacious two bedroom flat situated in a period conversion on West Cromwell Road. The property is south facing therefore benefiting from natural light throughout.

Located on West Cromwell Road, the property has easy access to Earls Court and High Street Kensington Stations as well as the local shops, restaurants and amenities on offer.

### Features

- Two Bedrooms
- One Bathroom
- Split Level
- Separate Kitchen
- Storage
- Spacious

West Cromwell Road,  
LONDON, SW5



## Second Floor

Total area (approx.): 57.0 sq. m (613.5 sq. ft)