



Philbeach Gardens, SW5

£692 Per week

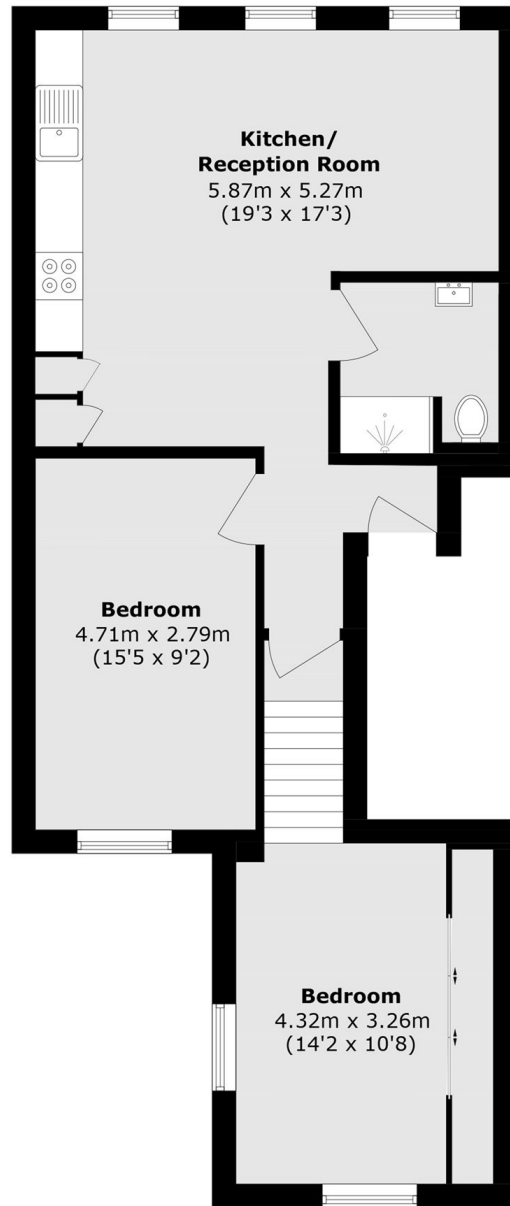
A well-presented two-bedroom apartment overlooking Philbeach Gardens. The residence has been comprehensively renovated throughout and offers the advantages of open-plan living, abundant natural light, and direct access to the communal gardens.

Situated on a tranquil one-way street, Philbeach Gardens enjoys close proximity to the shops, restaurants, and cafés of Earl's Court, while benefitting from being just 0.1 miles from the Underground station.

Features

- Two Bedrooms
- One Bathroom
- Recently Renovated
- Built in Storage
- Open Plan
- Communal Gardens

Philbeach Gardens, London, SW5



Third Floor

Total area (approx.): 65.6 sq. m (706.1 sq. ft)