

## Bolton Gardens, SW5

£1,250 Per week

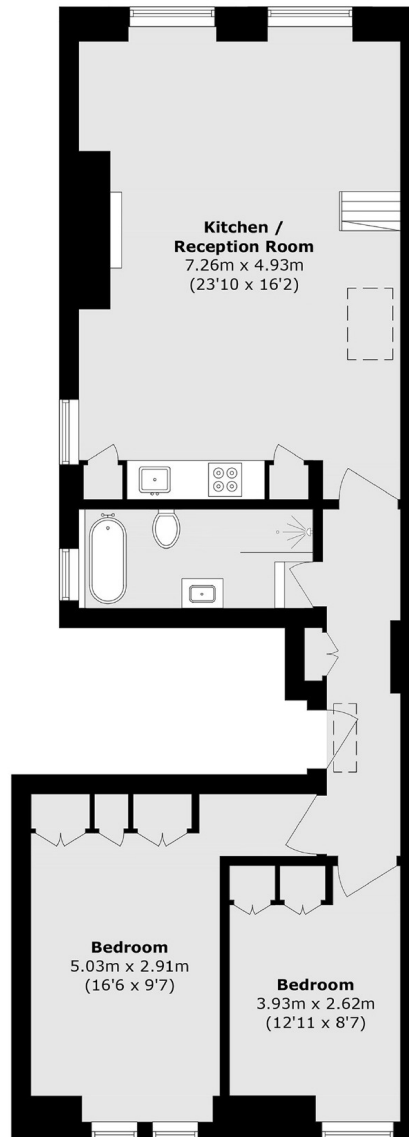
A stunning brand new refurbished two bedroom flat finished to an exceptional standard and located on the top floor over looking Bolton Gardens. The flat benefits from natural light throughout.

This flat is situated only a short walk to either Earls Court or Gloucester Road Underground Station, with a vast array of shops, cafés, restaurants and supermarkets on your doorstep.

### Features

- Two Double Bedrooms
- One Bathroom
- Brand New Refurbishment
- Wooden Flooring
- Built in Storage
- Bolton Gardens

# Bolton Gardens, London, SW5



## Third Floor

Total area (approx.): 74.6 sq. m (803.0 sq. ft)

**Dexters**

Earl's Court  
3 Hogarth Place  
London  
SW5 0QT  
Lettings  
020 7370 3030

Energy Rating: . We aim to make our particulars both accurate and reliable. However they are not guaranteed; nor do they form part of an offer or contract. If you require clarification on any points then please contact us, especially if you're traveling some distance to view. Please note that appliances and heating systems have not been tested and therefore no warranties can be given as to their good working order.

 **RICS** | Regulated  
Estate Agent  
and Letting Agent

[dexters.co.uk](https://www.dexters.co.uk)