



## Warwick Road, SW5

£850 Per week

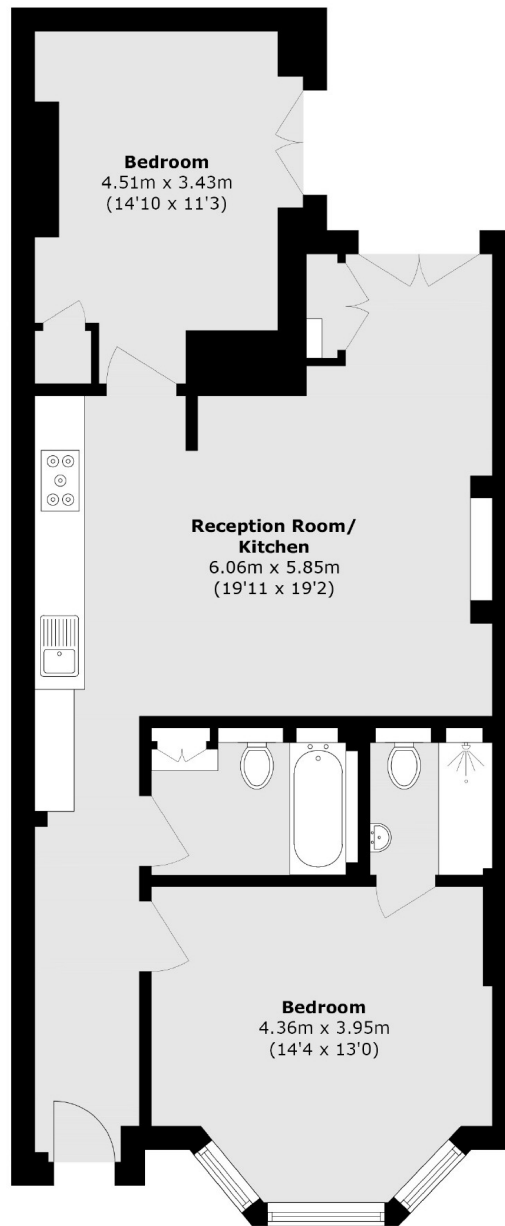
A modern and spacious two bedroom, two bathroom flat located on Warwick Road. The flat has wooden floors through, an open plan kitchen living areas with its own private patio and direct access into Philbeach Gardens.

Warwick Road is ideally situated in the heart of Earls Court. Local transport links, communal gardens, restaurants and cafés are all within walking distance.

### Features

- Two Double Bedroom
- Two Bathrooms
- Private Patio
- Philbeach Gardens Access
- Wooden Floors
- Open Plan

Warwick Road,  
London, SW5



Total area (approx.): 77.9 sq. m (838.5 sq. ft)

**Dexters**

Earl's Court  
3 Hogarth Place  
London  
SW5 0QT  
Lettings  
020 7370 3030

Energy Rating: C. We aim to make our particulars both accurate and reliable. However they are not guaranteed; nor do they form part of an offer or contract. If you require clarification on any points then please contact us, especially if you're traveling some distance to view. Please note that appliances and heating systems have not been tested and therefore no warranties can be given as to their good working order.

 **RICS** | Regulated  
Estate Agent  
and Letting Agent

[dexters.co.uk](https://www.dexters.co.uk)