



Earls Court Road, SW5

£865 Per week

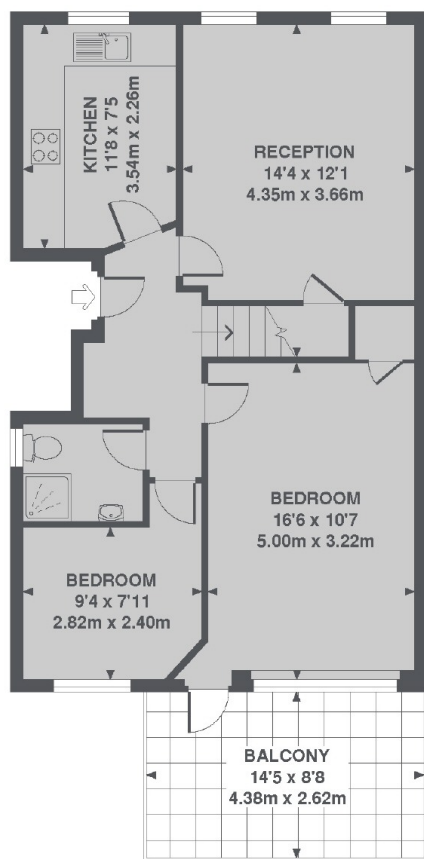
This fantastic three bedroom property is based over the second and third of a beautiful period conversion. The flat has three double bedrooms, three bathrooms and a private terrace.

Located close to shops and restaurants on Earls Court Road including Marks and Spencer simply foods, Wagamamas restaurant, Starbucks coffee shop. Earls Court is the closest underground station.

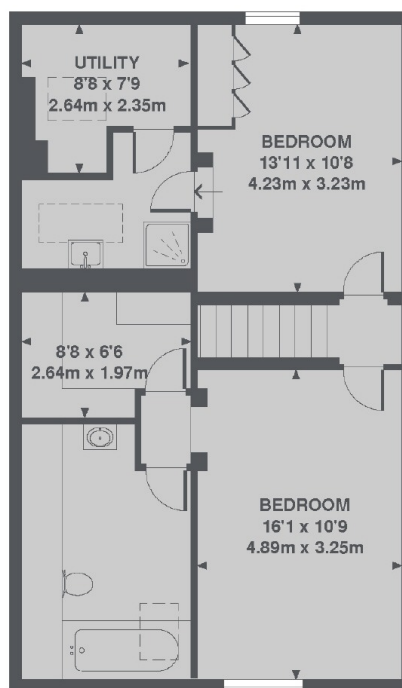
Features

- Three Bedrooms
- Three Bathrooms
- Split Level
- Private Terrace
- High Ceilings
- Walk In Wardrobes

Earls Court Road, London, SW5



2ND FLOOR



3RD FLOOR

TOTAL APPROX. FLOOR AREA 1335 SQ. FT. (124.0 SQ. M.)

Dexters

Earl's Court
3 Hogarth Place
London
SW5 0QT
Lettings
020 7370 3030

Energy Rating: E. We aim to make our particulars both accurate and reliable. However they are not guaranteed; nor do they form part of an offer or contract. If you require clarification on any points then please contact us, especially if you're traveling some distance to view. Please note that appliances and heating systems have not been tested and therefore no warranties can be given as to their good working order.

 **RICS** | Regulated
Estate Agent
and Letting Agent

[dexters.co.uk](https://www.dexters.co.uk)