



Cromwell Road, SW5

£1,038 Per week

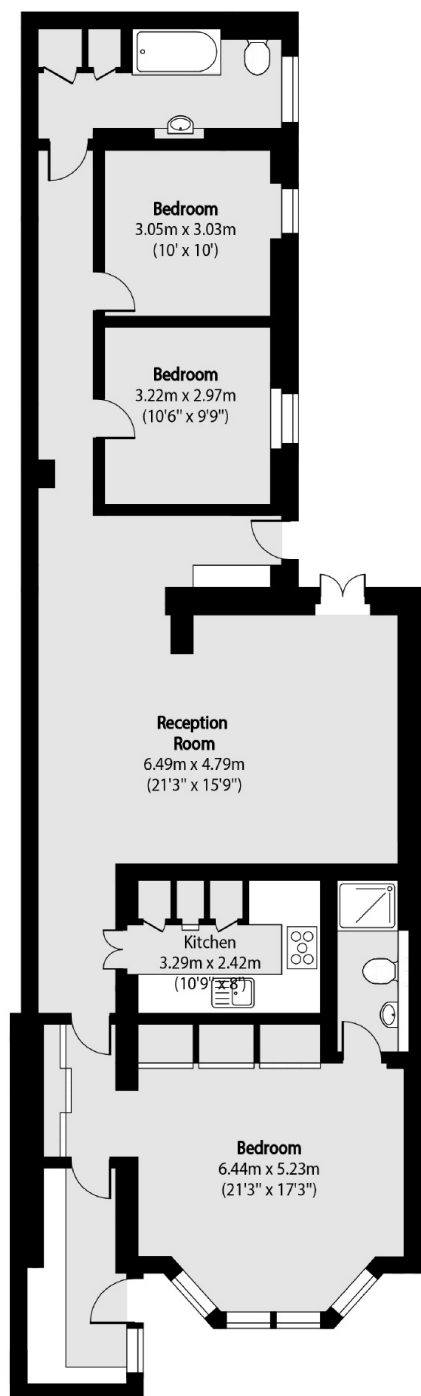
This stunning three bedroom, two bathroom flat has an additional study room and benefits from its own private south facing courtyard. The property has lots of storage and can be entered from both Redfield Lane and Cromwell Road.

The apartment is just a 5 minute walk from Earl's Court station which is serviced by the Piccadilly and District Lines. Also, within arms length of the M4 and Heathrow Airport.

Features

- Three Double Bedroom
- Two Bathrooms
- Separate Study
- South Facing Patio
- Separate Integrated Kitchen
- Two Entrances

Cromwell Road, London, SW5



Total area (approx): 127.62 sq m (1374 sq. ft)

Dexters

Earl's Court
3 Hogarth Place
London
SW5 0QT
Lettings
020 7370 3030

Energy Rating: C. We aim to make our particulars both accurate and reliable. However they are not guaranteed; nor do they form part of an offer or contract. If you require clarification on any points then please contact us, especially if you're traveling some distance to view. Please note that appliances and heating systems have not been tested and therefore no warranties can be given as to their good working order.

 **RICS** | Regulated
Estate Agent
and Letting Agent

[dexters.co.uk](https://www.dexters.co.uk)